



umhvørvisstovan
faroese environment agency

SJÓKORT- RÆTTINGAR

Chart Corrections

2023

20. desember 2023/ 9. útgáva

Yvirlit yvir sjókortrættingar 2023

Accumulative list of chart corrections 2023



SJÓKORTRÆTTINGAR

Chart Corrections / 2023

Útgáva / Edition	Sjókort nr : Rætting nr. / Chart no. : Correction no.
3. januar	85:1
22. februar	84:2
2. mai	85:3, 4
17.mai	82:5 85:6
30. juni	80:7 81:8 83:9, 10 85:11 86:12, 13, 14, 15
25. juli	82:16 84:17
23. august	80:18 81:19 82:20 85:21
20. november	80:22 81:23 82:24, 25, 26, 27
20. desember	82:28

Kort F - Føroyar við havøkjum. Sjókortrættingar sí www.gst.dk

Kort F - Faroe Islands with Maritime Zones, see www.gst.dk for chart corrections.

© Umhvørvisstovan

Sjókortrættingar / Chart Corrections

www.us.fo

Almennar sjókortrættingar fyri føroysk sjókort.

Upplýsingarnar í klombum eftir rættingarnar vísa til EfS (nr./leypanði ár) ella aðra keldu.

Allar rættingar hjá hvørjum einstøkum sjókorti eru tøkar á www.us.fo

Vegleiðing til útskrivan av rættingarblökkum: Vel papír A4 stødd og prenta veruligu stødd.

Skriva til sjokort@us.fo um tú hevur sjókortrættingar, ella viðmerkingar til siglingarrit ella sjókort.

Chart Corrections contains the official corrections to Faroese charts.

The figures in brackets after the corrections refer to EfS (no./serial no. year) or other source.

For each chart, a compilation of all corrections can be found at www.us.fo

Printing instructions for blocks at set scale: Print on paper size A4, print actual size.

Contact sjokort@us.fo if you have information on corrections or general comments to our charts and nautical publications.


Umhvørvisstovan, Traðargøta 38, Postboks 2048, FO-165 Argir, Tel. +298 342 400, us@us.fo, www.us.fo



Rættingar nr. / Corrections no.


Kort / Chart

1 SKÁLAFJÖRÐUR. RAKTANGI - TOTFIR

85 Set ímillum a) og b) /  *Harbour Limit* a) 62°05,417'N 006°45,776'W
Plan C *Insert between a) and b)* b) 62°05,114'N 006°44,380'W

(Runavíkar havn 22. november 2022)

2 VESTMANNASUND. OYRARGJÓGV

84 Set inn / *Insert*  62°07,724'N 007°10,405'W
Plan C

Set ímillum a) - d) 
Insert between a) - d) a) 62°06,950'N 007°10,377'W
Strond / *Shore*

b) 62°07,203'N 007°10,223'W

c) 62°07,698'N 007°10,513'W

d) 62°07,724'N 007°10,405'W

(SEV 8. februar 2023)


3 KLAKSVÍK

85 Broyt a) / *Amend in a) from* Iso.G.2s 28m a) 62°13,880'N 006°35,800'W
Plan E *til / to* Iso.G.2s 14m 8M b) 62°13,760'N 006°35,700'W

Broyt b) / *Amend in b) from* Iso.G.4s 36m
til / to Iso.G.4s 19m 8M

(Landsverk 3. mars 2023)

4 KLAKSVÍK

85 Strika frá a) og b) / *Delete in a) and b)*  a) 62°14,310'N 006°36,120'W
Plan E b) 62°14,346'N 006°35,615'W

(Umhvervisstovan 13. apríl 2023)

5 ÁNIRNAR

82 Strika frá a) og b) / *Delete in a) and b)* + a) 62°15,06'N 006°35,10W
b) 62°15,01'N 006°35,14W

(Landsverk 8. mai 2023)



Rættingar nr. / Corrections no.

Kort / Chart

6	ÁNIRNAR		
85	Strika frá a) og b) / <i>Delete in a) and b)</i>	+	a) 62°15,059'N 006°35,105W
Plan E			b) 62°15,015'N 006°35,139W
			(Landsverk 8. mai 2023)

7	SUÐUROY E		
80 (INT 1011)	Strika dýpd á a) / <i>Delete depth in a)</i>	⁹ ₁	a) 61°28,1'N 006°41,4W
	Strika dýpd á b) / <i>Delete depth in b)</i>	¹³ ₄	b) 61°32,0'N 006°43,5W
			(Umhvørvisstovan juni 2023)

8	TRONGISVÁGSFJØRÐUR - VÁGSFJØRÐUR		
81	Set inn tilhoyrandi mynd / <i>Insert accompanying block</i>		61°30,70N 006°40,90W
			(Umhvørvisstovan juni 2023)

9	KELDUR (SOURCES)		
83	Skift ut keldumynd við keldumynd, ið fylgir við / <i>Replace source diagram by accompanying source diagram</i>		
			(Umhvørvisstovan juni 2023)

10	TRONGISVÁGSFJØRÐUR - VÁGSFJØRÐUR		
83	Set inn tilhoyrandi mynd / <i>Insert accompanying block</i>		61°30,55N 006°41,00W
			(Umhvørvisstovan juni 2023)



11	FUGLAFJØRÐUR		
85	Strika / <i>Delete</i>	+	62°13,886N 006°48,732W
Plan B			
			(Landsverk 26. mai 2023)

12	ZOC DIAGRAM		
86	Set inn tilhoyrandi ZOC mynd / <i>Insert accompanying ZOC diagram</i>		
			(Umhvørvisstovan juni 2023)



Rættingar nr. / Corrections no.

Kort / Chart

13	TRONGISVÁGUR		
86	Set inn tilhoyrandi mynd / <i>Insert accompanying block</i>		61°32,166N 006°43,770W
Plan D			
			(Umhvørvisstovan juni 2023)
14	TRONGISVÁGUR. FROÐBIARNÍPA		
86	Set inn dýpd á a) og b) / <i>Insert depth in a) and b)</i>	²² _s	a) 61°33,266'N 006°43,862W
Plan D			b) 61°33,138'N 006°43,886W
	Strika dýpd á c) / <i>Delete depth in c)</i>	²⁴ _s	c) 61°33,182'N 006°43,891W
			(Umhvørvisstovan juni 2023)
15	VÁGSFJØRÐUR		
86	Set inn tilhoyrandi mynd / <i>Insert accompanying block</i>		61°28,470N 006°41,820W
Plan E			
			(Umhvørvisstovan juni 2023)
16	VESTMANNASUND		
82	Set ímillum a) - g) / <i>Insert between a) and g)</i>		a) 62°09,14N 007°09,33W
			b) 62°09,00N 007°09,97W
			c) 62°08,55N 007°10,47W
			d) 62°08,42N 007°10,85W
			e) 62°08,25N 007°11,05W
			f) 62°08,28N 007°11,30W
			g) 62°08,14N 007°11,27W
			(29/648 2023)
17	VESTMANNASUND		
84	Set ímillum a) - f) / <i>Insert between a) and f)</i>		a) 62°09,145N 007°09,329W
Plan C			b) 62°09,134N 007°09,472W
			c) 62°08,998N 007°09,982W
			d) 62°08,565N 007°10,449W
			e) 62°08,421N 007°10,853W
			e) 62°08,261N 007°11,042W
			f) 62°08,256N 007°11,150W
			Rammuna / <i>Border</i>
			(29/648 2023)



Rættingar nr. / Corrections no.

Kort / Chart

18 NÓLSOY S

80 (INT 1011)	Set inn dýpd á a) / <i>Insert depth in a)</i>	23 ₅	a) 61°54,4'N 006°39,6W
	Strika dýpd á b) / <i>Delete depth in b)</i>	41	b) 61°54,2'N 006°39,8W

(Umhvørvisstovan juni 2023)

19 NÓLSOY S

81	Set inn dýpd á a) / <i>Insert depth in a)</i>	23 ₅	a) 61°54,44'N 006°39,58W
	Strika dýpd á b) / <i>Delete depth in b)</i>	41	b) 61°54,23'N 006°39,76W

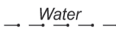
(Umhvørvisstovan juni 2023)

20 NÓLSOY S

82	Set inn dýpd á a) / <i>Insert depth in a)</i>	23 ₅	a) 61°54,44'N 006°39,58W
----	---	-----------------	--------------------------

(Umhvørvisstovan juni 2023)

21 OYNDARFJØRÐUR

85	Set ímillum a) - g) /		a) 62°15,735'N 006°51,802W
Plan A	<i>Insert between a) and g)</i>		b) 62°15,778'N 006°51,664W
			c) 62°15,750'N 006°51,353W
			d) 62°15,850'N 006°50,950W
			e) 62°15,920'N 006°50,578W
			f) 62°16,075'N 006°50,060W
			g) 62°16,148'N 006°49,621W

(HFS 17. august 2023)

22 SANDOYARBANKI

80	Set ímillum a) - e) /		a) 61°40,0'N 005°50,0W
	<i>Insert between a) - e)</i>		b) 62°00,0'N 005°50,0W
			c) 62°00,0'N 005°20,0W
			d) 61°40,0'N 005°20,0W
			e) 61°40,0'N 005°50,0W

(Arktisk Kommando 16. november 2023)



Rættingar nr. / Corrections no. Kort / Chart

23 SANDOY E

81	Set ímillum a) - d) / Insert between a) - d)		a) 61°40,0'N 005°43,0W Rammuna / Border b) 61°40,0'N 005°50,0W c) 62°00,0'N 005°50,0W d) 62°00,0'N 005°43,0W Rammuna / Border
----	---	--	--


(Arktisk Kommando 16. november 2023)

24 SVÍNOY. SVÍNOYARVÍK

82	Set ímillum a) - c) / Insert between a) and c)		a) 62°16,38'N 006°19,55W b) 62°16,44'N 006°19,98W c) 62°16,47'N 006°20,29W Strond / Shore
	Set ímillum d) - e) / Insert between d) and e)		d) 62°16,51'N 006°19,98W e) 62°16,47'N 006°20,29W Strond / Shore

(HFS 1. november 2023)

25 BORÐOY. HVANNASUND SE

82	Set ímillum a) - d) / Insert between a) and d)		a) 62°16,50'N 006°30,23W b) 62°16,42'N 006°29,73W c) 62°16,24'N 006°29,16W d) 62°15,97'N 006°27,70W
----	---	--	--

(HFS 1. november 2023)

26 BORÐOY. HARALDSSUND

82	Set ímillum a) - c) / Insert between a) and c)		a) 62°16,35'N 006°35,75W b) 62°16,58'N 006°35,82W c) 62°17,10'N 006°35,67W
----	---	--	--

(HFS 1. november 2023)



Rættingar nr. / *Corrections no.* Kort / *Chart*

27 EYSTUROY. LAMBAVÍK

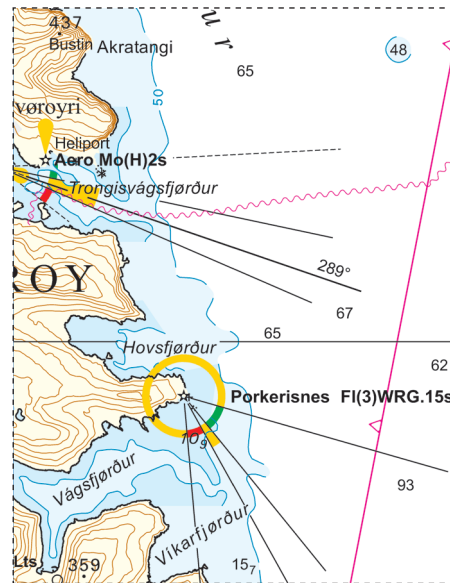
82 Set ímillum a) - c)/
Insert between a) and c) --- -- a) 62°07,39'N 006°39,31W
Strond / Shore
b) 62°07,40'N 006°38,93W
c) 62°07,38'N 006°37,14W
(HFS 1. november 2023)

28 VESTMANNASUND

82 Set inn tilhoyrandi mynd / *Insert accompanying block* 62°08,16N 007°10,98W
(Minesto 15. desember 2023)

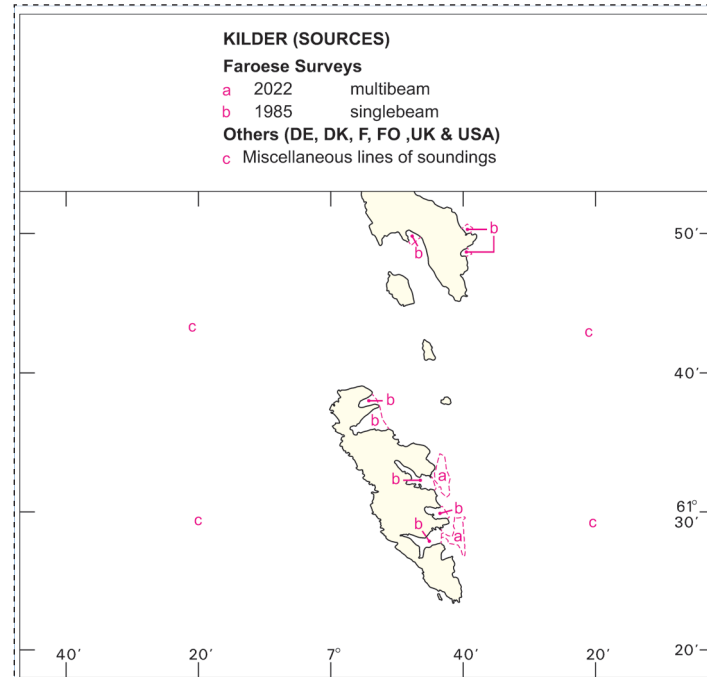


Mynd, kort / Block chart 81



Sjókortrætting / Chart Correction 8/2023

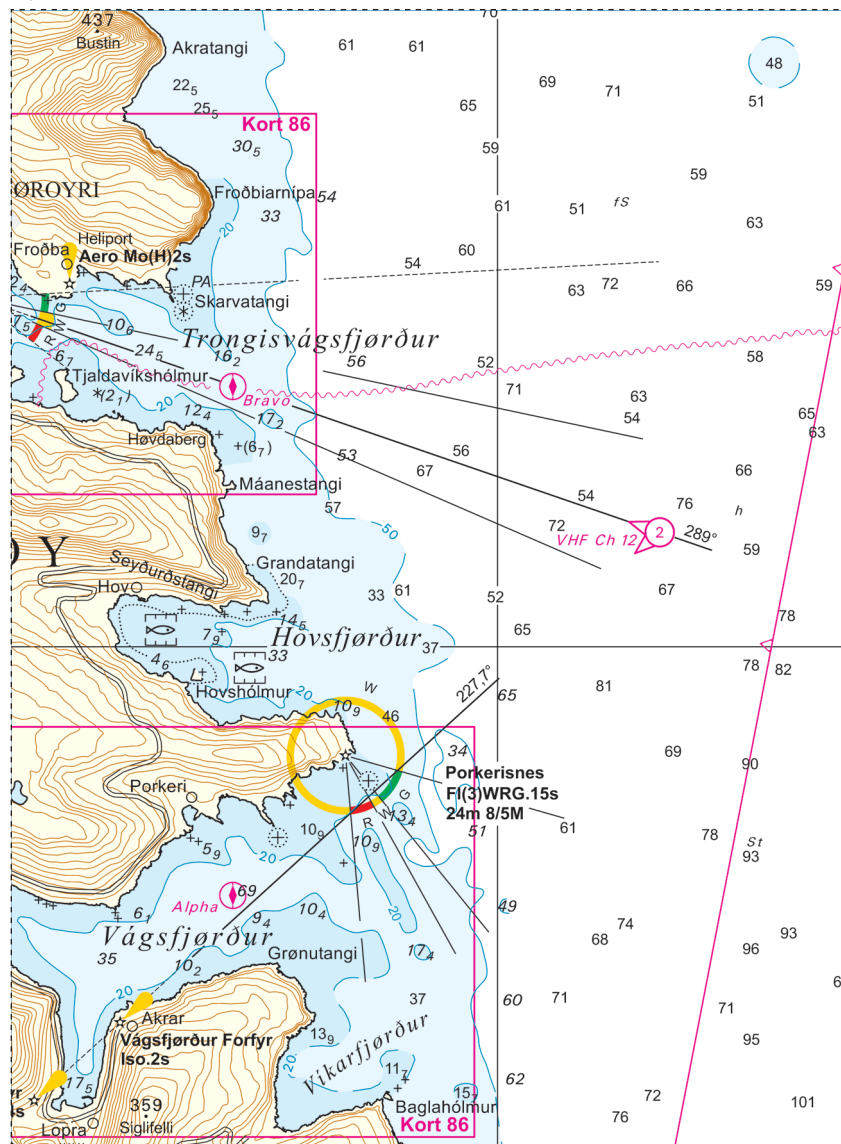
Mynd, kort / Block chart 83



Sjókortrætting / Chart Correction 9/2023

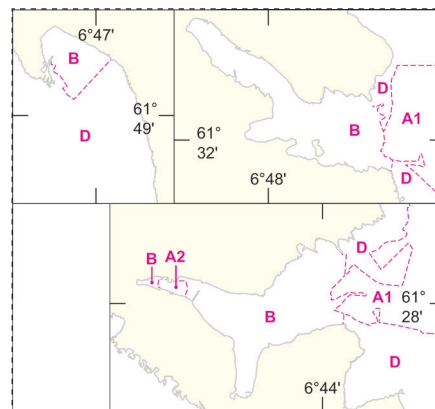


Mynd, kort / Block chart 83



Sjókortrætting / Chart Correction 10/2023

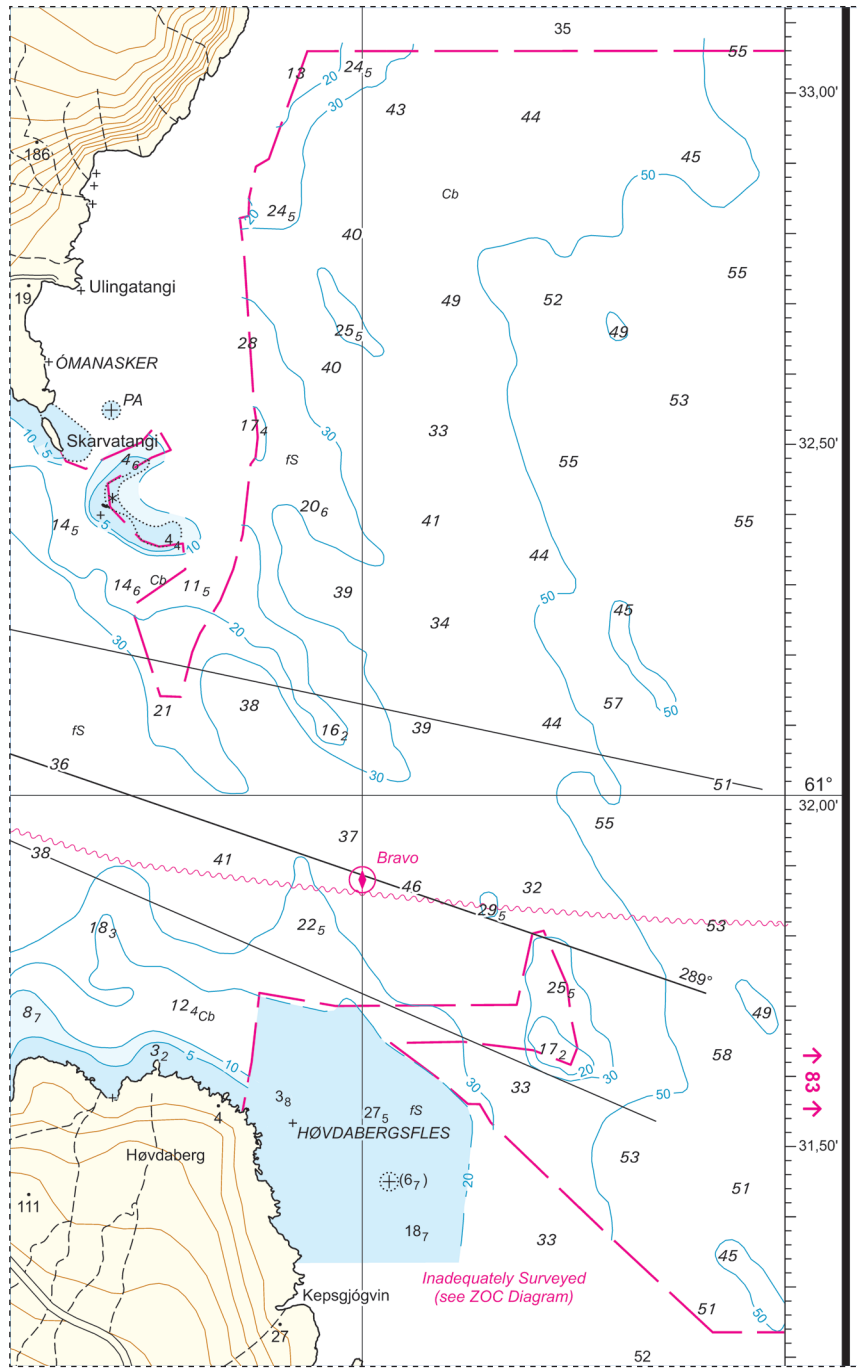
Mynd, kort / Block chart 86



Sjókortrætting / Chart Correction 12/2023



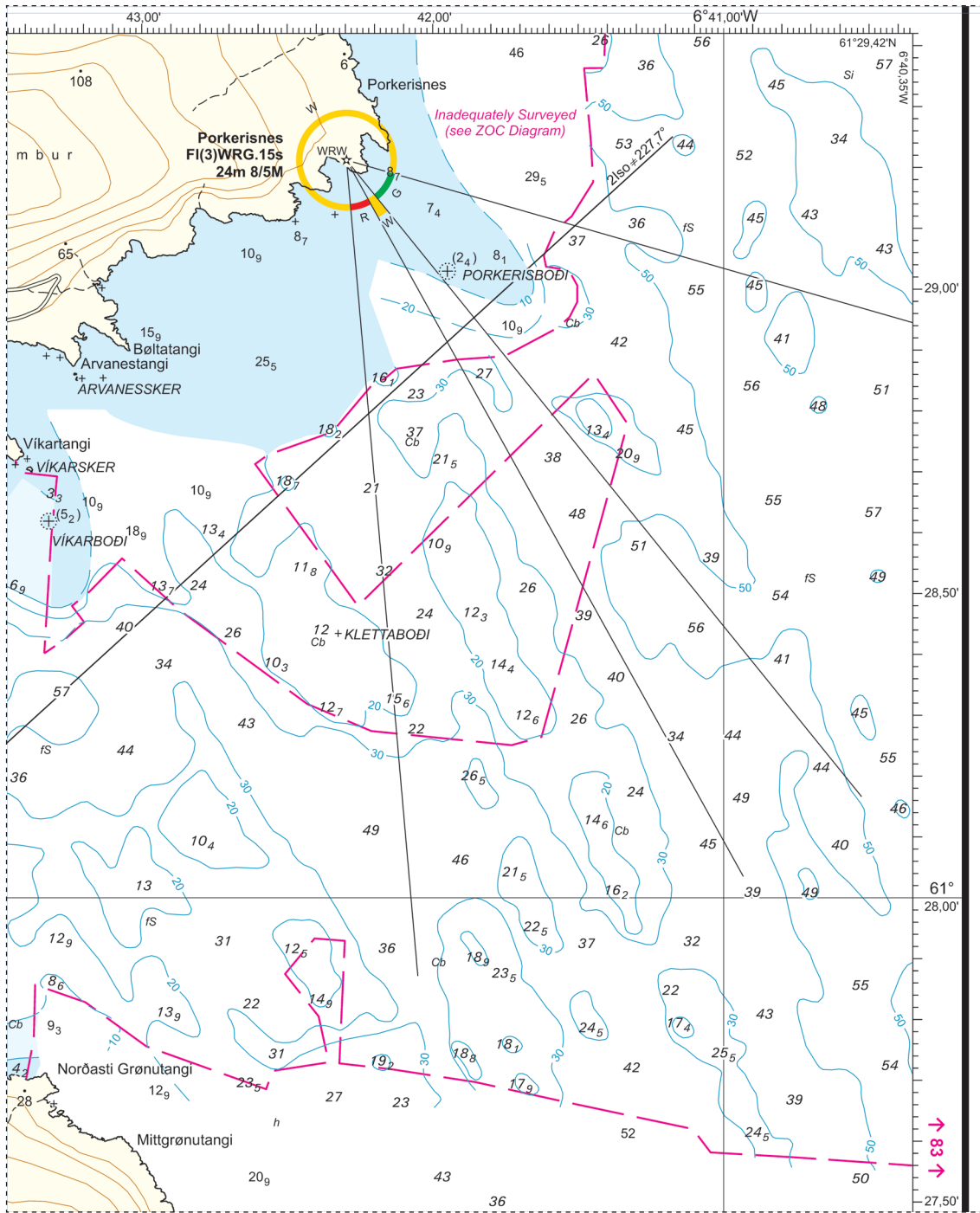
Mynd, kort / Block chart 86 D



Sjókortrætting / Chart Correction 13/2023

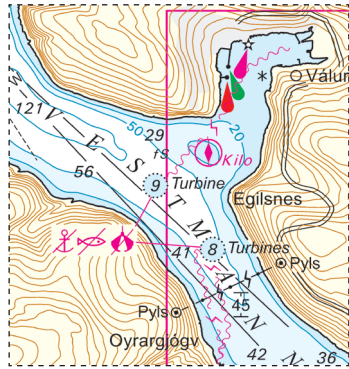


Mynd, kort / Block chart 86 E





Mynd, kort / Black chart 82



Sjókortrætting / Chart Correction 28/2023