



umhvørvisstovan
faroese environment agency

SJÓKORT- RÆTTINGAR

Chart Corrections

KORT 82

Rætting nr. / Correction no. 228 (2015) - 28 (2023)



SIJÓKORTRÆTTINGAR

Chart Corrections / Kort 82

Dagført til sjókortrætting nr. (íroknað)
Updated to Chart Corrections no. (incl.)

Galdandi sjókortútgáva (nr. /dagur)
Current chart edition (no. / date)

42 / 2014

3 / nov 2014

Ár / Year	Rætting nr. / Correction no.
2015	228, 248, 394
2016	1, 216, 217, 315, 418
2017	189, 304
2018	130, 131, 308, 309, 327, 328
2019	30, 216, 406, 407, 408, 409, 410, 411, 412, 486
2020	267, 369, 390, 525, 645
2021	28, 29, 30, 47, 48, 185, 186, 1007
2022	6, 7, 8, 11, 13, 19, 20, 21, 24, 25, 26, 30, 32
2023	5, 16, 20, 24, 25, 26, 27, 28

© Umhvørvisstovan

Sjókortrættingar / Chart Corrections

www.us.fo

Kort 82 sjókortrættingar inniheldur almennar sjókortrættingar fyri galdandi útgávu av sjókort 82. Sjókortrættingar áðrenn 1. juli 2021 vóru útgivnar av GST.

Upplýsingarnar í klombum eftir rættingarnar vísa til EFS (nr./leypanði ár) ella aðra keldu.

Vegleiðing til útskrivan av rættingarblökkum: Vel papír A4 stódd og prenta veruligu stódd.

Chart Corrections Kort 82 contains the official corrections to the current edition of Faroese Chart 82. Chart corrections issued prior to 1st July 2021 were originally published by the Danish Geodata Agency.

The figures in brackets after the corrections refer to EFS (no./serial no. year) or other source.

Printing instructions for blocks at set scale: Print on paper size A4, print actual size.

Umvørvisstovan, Træðargøta 38, Postboks 2048, FO-165 Argir, Tel. +298 342 400, us@us.fo, www.us.fo



Ár/ Year

Rættingar nr. / Corrections no.

2015	SØRVÁGUR N OG NW		
228	Udtag på 1) / <i>Delete in 1)</i> Tilføj på 2) og 3) / <i>Insert in 2) and 3)</i>	Ldg.Lts Lt	1) 62°04,32'N 007°17,91'W 2) 62°04,323'N 007°18,711'W 2) 62°04,789'N 007°20,517'W
			(13-14/374 2015)

2015	NÓLSOY		
248	Udtag / <i>Delete</i>		62°00'N 006°37'W
			(17/483 2015)

2015	BORÐOY. ÁRNAFJØRÐUR S		
394	Tilføj medfølgende udsnit / <i>Insert accompanying block</i>		62°14,30'N 006°30,26'W
			(28/806 2015)


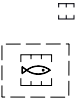

2016	TOFTIR S		
1	Tilføj i et område afgrænset af - - - - mellem 1) - 4) <i>Insert in an area bounded by - - - - joining 1) - 4)</i>		1) 62°04,069'N 006°43,173'W 2) 62°04,012'N 006°43,399'W 3) 62°04,815'N 006°44,322'W 4) 62°04,873'N 006°44,096'W
			(2/122 2016)

2016	FUGLAFJØRÐUR W		
216	Tilføj mellem 1) og 2) / <i>Insert between 1) and 2)</i>		1) 62°13,781'N 006°48,867'W 2) 62°14,065'N 006°47,824'W
			(19/497 2016)



Ár/ Year

Rættingar nr. / Corrections no.

2016	SKÁLAFJØRÐUR S		
217	Tilføj mellem 1) - 5) og 6) - 9) <i>Insert between 1) -5) and 6) - 9)</i>		1) 62°07,005'N 006°45,156'W kyst / shore 2) 62°06,924'N 006°44,926'W 3) 62°06,761'N 006°44,867'W 4) 62°06,693'N 006°44,198'W 5) 62°06,673'N 006°44,182'W kyst / shore 6) 62°06,717'N 006°45,359'W kyst / shore 7) 62°06,759'N 006°45,184'W 8) 62°06,693'N 006°44,201'W 9) 62°06,673'N 006°44,185'W kyst / shore
(LV, 9. maj og 19/498 2016)			
2016	HALDÓRSVÍK S		
315	Udtag på 1) og 2) / <i>Delete in 1) and 2)</i> Tilføj område afgrænset af 3) - 6) <i>Insert area bounded by 3) - 6)</i>		1) 62°15,474'N 007°04,251'W 2) 62°15,232'N 007°04,090'W 3) 62°15,144'N 007°03,824'W 4) 62°15,090'N 007°04,187'W 5) 62°15,885'N 007°04,732'W 6) 62°15,939'N 007°04,369'W
(29/742 2016)			
2016	INNAN GLYVUR E		
418	Tilføj mellem 1) - 6) / <i>Insert between 1) - 6)</i>		1) 62°07,972'N 006°43,903'W kyst / shore 2) 62°08,135'N 006°44,349'W 3) 62°08,242'N 006°44,501'W 4) 62°08,443'N 006°44,919'W 5) 62°08,502'N 006°45,269'W 6) 62°08,507'N 006°45,581'W kyst / shore
(37/939 2016)			



Ár/ Year




Rættingar nr. / Corrections no.

2017	VELBASTAÐUR FYR SE		
189	Ret havbrug på 1) / Amend marine farm in 1) til et område afgrænset af ___ mellem 2) - 8) to an area bounded by ___ 2) - 8) joining.		1) 61°58,50'N 006°50,65'W 2) 61°58,372'N 006°50,188'W 3) 61°58,275'N 006°50,386'W 4) 61°58,465'N 006°50,807'W 5) 61°58,484'N 006°50,767'W 6) 61°58,585'N 006°50,990'W 7) 61°58,651'N 006°50,855'W 8) 61°58,614'N 006°50,724'W (21/476 2017)
2017	VÍKAR		
304	Tilføj / Insert		62°08,103'N 007°22,838'W (38/804 2017)
2018	VÁGAR N		
130	Tilføj / Insert	FI(5)Y.20s Recording Station	62°08,25'N 007°22,77'W (10/166 2018)
2018	BOÐIN E		
131	Udtag / Delete	FI(5)Y.20s Recording Station	62°00,19'N 006°36,31'W (10/179 2018)
2018	KONGSHAVN		
308	Tilføj / Insert	Q.G	62°07,149'N 006°43,568'W (25/524 2018)
2018	LEIRVÍKSFJØRÐUR		
309	Tilføj medfølgende udsnit / Insert accompanying block		62°15,47'N 006°40,49'W (23/475, 483 2018)



Ár/ Year

Rættingar nr. / Corrections no.

2018	KONGSHAVN			
	Ref.: Søkortrettelser / Chart Corrections 25/308 2018			
327	Tilføj / Insert		62°07,149'N 006°43,568'W	(25/524 2018)
2018	VESTMANNA			
328	Udtag på 1) / Delete in 1)	Lt	1) 62°08,722'N 007°10,702'W	
	Udtag på 2) / Delete in 2)	Lts	2) 62°09,123'N 007°08,939'W	
				(26/539 2018)
2019	RUNAVÍK			
	Ref.: Søkortrettelser / Chart Corrections 26/327 2018			
30	Udtag / Delete	 A.Q.G	62°07,137'N 006°43,685'W	(4/59 2019)
2019	HESTUR			
216	Ret fra / Amend from	Fl.3s 75m 7M	61°55,947'N 006°52,108'W	
	til / to	Fl.3s 55m 7M		
				(20/331 2019)
2019	KILDER (SOURCES)			
406	Erstat kildedialogram med medfølgende kildedialogram Replace source diagram by accompanying source diagram			(Landsverk, 3. juli 2019)
2019	SEKKJATANGSBØÐI			
407	Tilføj medfølgende udsnit / Insert accompanying block		62°07,73'N 006°35,45'W	(27/452 2019)
2019	SUNDINI N			
408	Tilføj / Insert		62°16,579'N 007°05,028'W	(Landsverk, 12. juli 2019)



Ár/ Year

Rættingar nr. / Corrections no.

2019	SUNDINI S		
409	Tilføj medfølgende udsnit / <i>Insert accompanying block</i>		62°14,26'N 007°03,08'W (Landsverk, 12. juli 2019)
2019	BORÐOYARVÍK		
410	Tilføj medfølgende udsnit / <i>Insert accompanying block</i>		62°11,34'N 006°33,02'W (Landsverk, 12. juli 2019)
2019	KALDBAKSFJØRÐUR		
411	Flyt fra 1) - 2) / <i>Move from 1) - 2)</i>	E3	1) 62°03,500'N 006°52,000'W 2) 62°03,586'N 006°52,520'W (Landsverk, 12. juli 2019)
2019	KALDBAKSFJØRÐUR		
412	Udtag på 1) - 5) / <i>Delete in 1) - 5)</i>	E3	1) 62°03,527'N 006°49,366'W 2) 62°03,641'N 006°48,768'W 3) 62°03,420'N 006°48,658'W 4) 62°03,356'N 006°49,261'W 5) 62°03,527'N 006°49,366'W
	Tilføj på 6) - 10) / <i>Insert in 6) - 10)</i>	E3	6) 62°03,675'N 006°48,473'W 7) 62°03,376'N 006°48,323'W 8) 62°03,376'N 006°49,088'W 9) 62°03,594'N 006°49,199'W 10) 62°03,675'N 006°48,473'W (Landsverk, 12. juli 2019)
2019	VÍKAR		
486	Tilføj medfølgende udsnit / <i>Insert accompanying block</i>		62°08,28'N 007°23,41'W (36/593 2019)
2020	SUNDINI N		
	Ref.: Søkortrettelser / <i>Chart Corrections 28/408 2019</i>		
267	Flyt fra 1) / <i>Move from 1)</i> til 2) / <i>to 2)</i>	E3	1)62°16,579'N 007°05,028'W 2)62°16,903'N 007°05,251'W (19/303 2020)



Ár/ Year

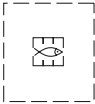
Rættingar nr. / Corrections no.

2020	SEKKJATANGSBOÐI		
	Ref.: Søkortrettelser / Chart Corrections 28/407 2019		
369	Tilføj medfølgende udsnit / Insert accompanying block		62°07,30'N 006°35,40'W (GST, 17. juni 2020)
2020	KALSOY NW		
390	Tilføj på 1) / Insert in 1)	☉	1) 62°21,331'N 006°48,839'W 2) 62°21,323'N 006°48,855'W
	Tilføj på 2) / Insert in 2)	☉	
			(25/426 2020)
2020	VÁGAR NE		
525	Tilføj på 1) - 4) / Insert in 1) - 4)	vvsw	1) 62°06,950'N 007°10,380'W kyst / shore 2) 62°07,068'N 007°10,334'W 3) 62°07,729'N 007°10,747'W 4) 62°07,772'N 007°10,570'W
			(35/588 2020)
2020	VESTMANNASUND		
645	Tilføj medfølgende udsnit / Insert accompanying block		62°07,54'N 007°10,89'W (45/797 2020)
2021	KALDBAKSFJØRÐUR		
	Ref.: Søkortrettelser / Chart Corrections 28/411 2019		
28	Udtag / Delete	☒	62°06,586'N 006°52,520'W (5/68 2021)
2021	SUNDINI S		
29	Tilføj medfølgende udsnit / Insert accompanying block		1)62°14,644'N 007°02,400'W (5/68 2021)



Ár/ Year

Rættingar nr. / Corrections no.

2021	LÍTLANES		
30	Tilføj imellem 1) - 4) / <i>Insert between 1) - 4)</i>		1) 62°16,857'N 006°55,959'W 2) 62°17,080'N 006°56,478'W 3) 62°17,317'N 006°55,552'W 4) 62°17,110'N 006°55,265'W (5/69 2021)
2021	KALDBAKSFJØRÐUR		
	Ref.: Søkortrettelser / <i>Chart Corrections 5/28 2021</i>		
47	Udtag / <i>Delete</i>		62°03,586'N 006°52,520'W korrigeret / <i>corrected</i> (5/068 2021)
2021	FUNNINGSFJØRÐUR SW		
48	Tilføj medfølgende udsnit / <i>Insert accompanying block</i>		62°17,18'N 006°55,63'W (5/069 2021)
2021	GØTUVÍK		
185	Tilføj medfølgende udsnit / <i>Insert accompanying block</i>		62°09,94'N 006°40,68'W (20/391 2021)
2021	VESTMANNASUND E		
186	Tilføj imellem 1) - 6) / <i>Insert between 1) - 6)</i>		1) 62°06,091'N 007°07,578'W 2) 62°06,164'N 007°07,560'W 3) 62°06,075'N 007°06,042'W 4) 62°05,995'N 007°06,052'W 5) 62°05,988'N 007°06,719'W 1) 62°06,091'N 007°07,578'W (20/392 2021)



Ár/ Year

Rættingar nr. / Corrections no.

2021	VÁGAFJØRÐUR - SANDOY NW		
1007	Rætta a) - c) / Amend in a) - c)		a) 62°02,17'N 007°07,87'W b) 62°01,88'N 007°06,53'W c) 62°01,67'N 007°06,23'W
	Til d) - f) / to d) - f)		d) 62°02,17'N 007°07,87'W e) 62°01,84'N 007°07,36'W f) 62°01,67'N 007°06,23'W
	Rætta g) - i) / Amend in g) - i)		g) 61°59,85'N 007°04,40'W h) 61°56,56'N 007°00,77'W i) 61°54,73'N 006°59,55'W
	Til j) - m) / to j) - m)		j) 61°59,85'N 007°04,40'W k) 61°57,36'N 007°05,80'W l) 61°55,36'N 007°03,86'W m) 61°54,73'N 006°59,55'W
(NET, 29. september 2021)			

2022	VESTMANNASUND		
6	Strika frá a) - d) / Delete in a) - d)		a) 62°08,29'N 007°13,16'W Strond / Coast
			b) 62°08,34'N 007°12,93'W c) 62°08,22'N 007°12,46'W d) 62°08,11'N 007°12,53'W Strond / Coast
(12/203 2022)			

2022	SUNDINI N		
7	Strika / Delete		62°15,40'N 007°03,70'W
(12/205 2022)			

2022	SUNDALAGIÐ S		
8	Strika / Delete		62°09,91'N 006°56,15'W
(12/204 2022)			



Ár/ Year

Rættingar nr. / Corrections no.

2022	SUNDALAGIÐ S		
11	Rætta / Amend from til / to	$\overline{55}$ $\overline{48}$	62°09,53'N 006°56,09'W (SEV 18. mars 2022)
2022	KALSOYARFJØRÐUR		
13	Rætta / Amend from til / to	$\overline{55}$ $\overline{45}$	62°15,69'N 006°40,13'W (SEV 18. mars 2022)
2022	NÓLSOY		
19	Set inn lýsing av ljósi / Insert at the light description	(20.7.-20.5.)	61°57,50'N 006°33,45'W (Umhvørvisstovan mai 2022)
2022	MYKINES		
20	Set inn lýsing av ljósi / Insert at the light description	(20.7.-20.5.)	62°05,00'N 007°43,95'W (Umhvørvisstovan mai 2022)
2022			
21	Strika tekst GENERALISERING / Delete note GENERALIZATION		 (Umhvørvisstovan mai 2022)
2022	NÓLSOY		
24	Set inn í 500m frástøðu frá strandalinjuni (0.5cm í sjókort lutfalli) / Insert at 500m distance from coastline (0.5cm at chart scale)	 See Note	61°58,70'N 006°39,00'W (Umhvørvisstovan mai 2022)



Ár/ Year

Rættingar nr. / Corrections no.

2022	MYKINES		
25	Sett inn í 500m frástöðu frá strandalinjuni (0.5cm í sjókort lutfalli) / Insert at 500m distance from coastline (0.5cm at chart scale)		62°06,40'N 007°36,00'W (Umhvervisstovan maí 2022)
2022			
26	Sett inn tilhoyrandi tekst RAMSAR OYGGJ / Insert accompanying note RAMSAR SITE		(Umhvervisstovan maí 2022)
2022	FLESJARNAR		
30	Sett inn tilhoyrandi mynd / Insert accompanying block		62°05,00'N 006°45,70'W (Umhvervisstovan maí 2022)
2022	VELBASTAÐUR		
32	Sett inn tilhoyrandi mynd / Insert accompanying block		61°56,39'N 006°50,57'W (25/489 2022 / Umhvervisstovan 2022)
2023	ÁNIRNAR		
5	Strika frá a) og b) / Delete in a) and b)	+	a) 62°15,06'N 006°35,10W b) 62°15,01'N 006°35,14W (Landsverk 8. maí 2023)
2023	VESTMANNASUND		
16	Sett ímillum a) - g) / Insert between a) and g)		a) 62°09,14N 007°09,33W b) 62°09,00N 007°09,97W c) 62°08,55N 007°10,47W d) 62°08,42N 007°10,85W e) 62°08,25N 007°11,05W f) 62°08,28N 007°11,30W g) 62°08,14N 007°11,27W (29/648 2023)



Ár/ Year

Rættingar nr. / Corrections no.

2023 NÓLSOY S

20 Set inn dýpd á a) / *Insert depth in a)* ^{23₅} a) 61°54,44'N 006°39,58W
(Umhvørvisstovan júní 2023)

2023 SVÍNOY. SVÍNOYARVÍK

24 Set ímillum a) - c)/
Insert between a) and c) --- -- a) 62°16,38'N 006°19,55W
b) 62°16,44'N 006°19,98W
c) 62°16,47'N 006°20,29W
Strond / Shore

Set ímillum d) - e)/
Insert between d) and e) --- -- d) 62°16,51'N 006°19,98W
e) 62°16,47'N 006°20,29W
Strond / Shore

(HFS 1. november 2023)

2023 BORÐOY. HVANNASUND SE

25 Set ímillum a) - d)/
Insert between a) and d) --- -- a) 62°16,50'N 006°30,23W
b) 62°16,42'N 006°29,73W
c) 62°16,24'N 006°29,16W
d) 62°15,97'N 006°27,70W

(HFS 1. november 2023)

2023 BORÐOY. HARALDSSUND

26 Set ímillum a) - c)/
Insert between a) and c) --- -- a) 62°16,35'N 006°35,75W
b) 62°16,58'N 006°35,82W
c) 62°17,10'N 006°35,67W

(HFS 1. november 2023)

2023 EYSTUROY. LAMBAVÍK

27 Set ímillum a) - c)/
Insert between a) and c) --- -- a) 62°07,39'N 006°39,31W
Strond / Shore
b) 62°07,40'N 006°38,93W
c) 62°07,38'N 006°37,14W

(HFS 1. november 2023)



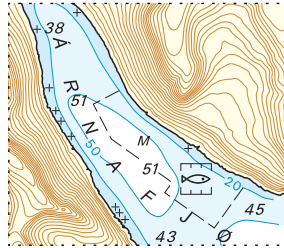
Ár/ Year

Rættingar nr. / Corrections no.

2023	VESTMANNASUND	
28	Set inn tilhoyrandi mynd / <i>Insert accompanying block</i>	62°08,16N 007°10,98W (Minesto 15. desember 2023)



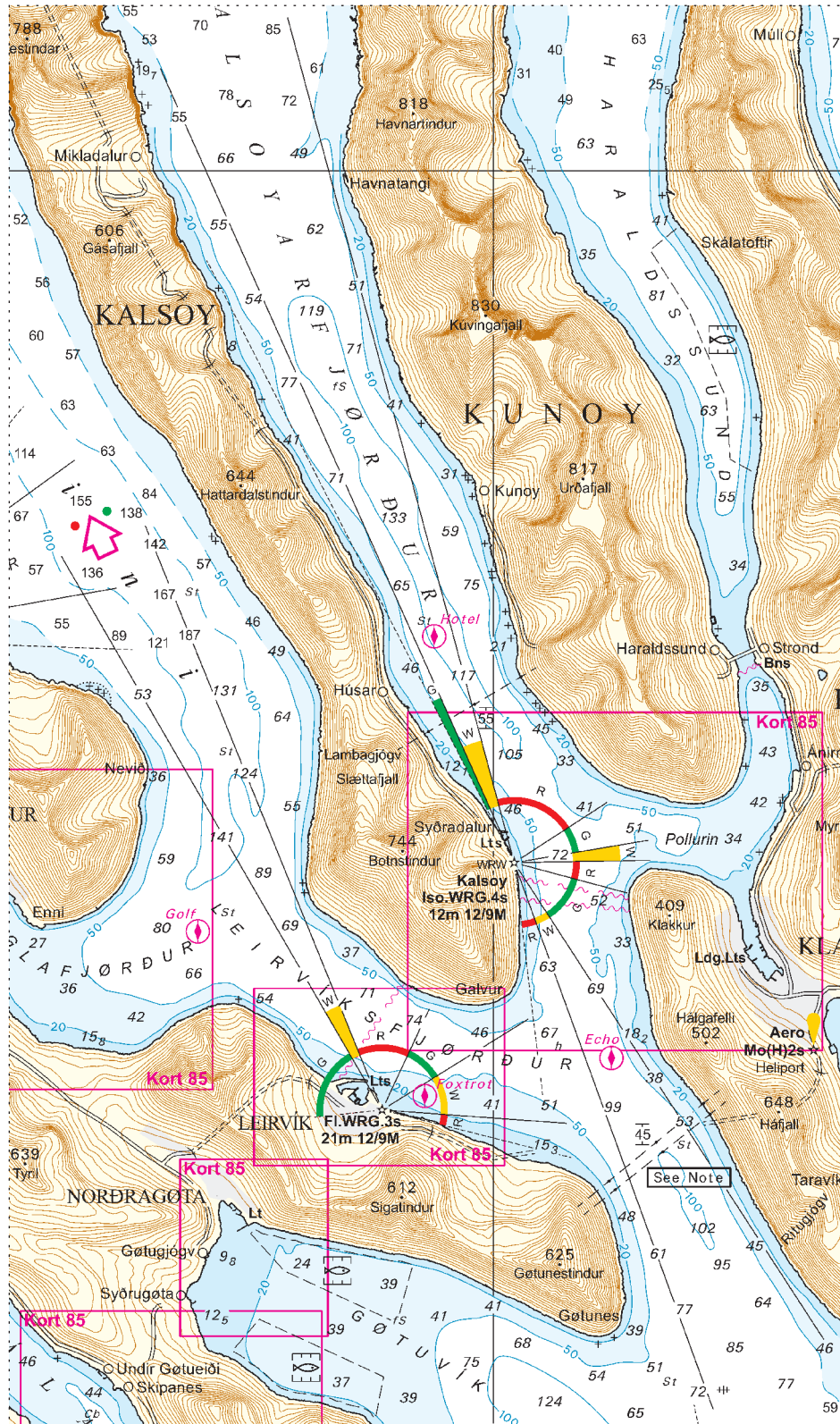
Udsnit kort/*Block chart 82*



Søkortrettelser/*Chart Corrections 28/394 2015*



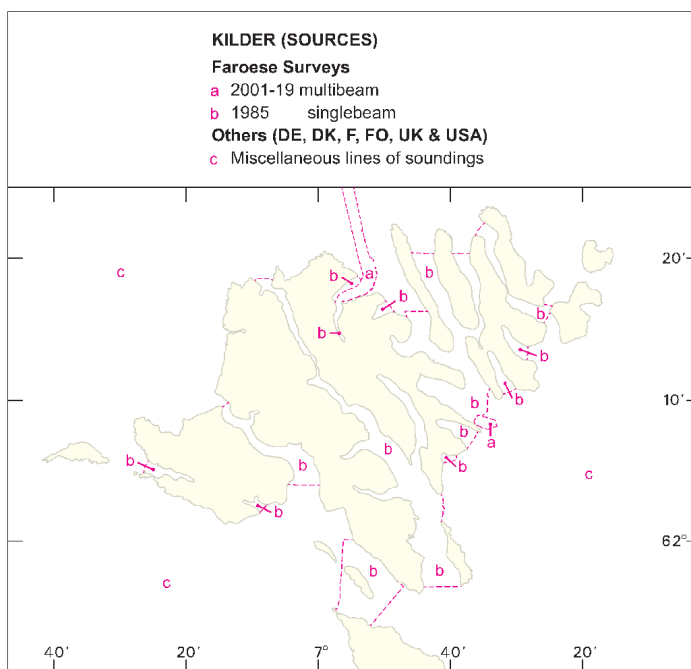
Udsnit kort / Block chart 82



Søkortrettelser / Chart Corrections 25/309 2018

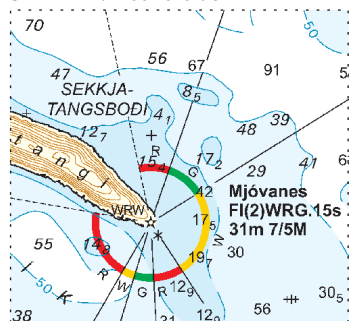


Udsnit kort / Block chart 82



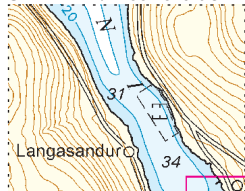
Søkortrettelser / Chart Corrections 28/406 2019

Udsnit kort / Block chart 82

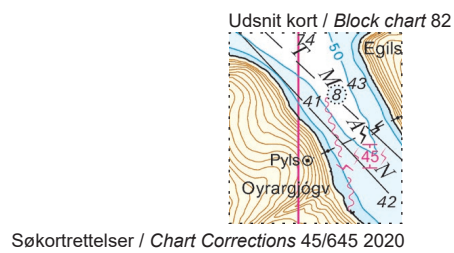
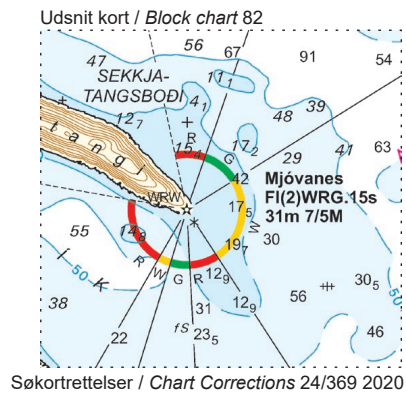
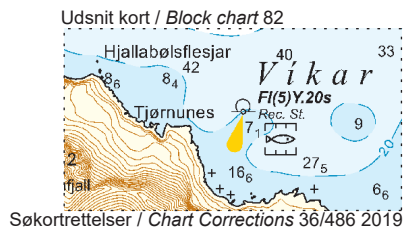
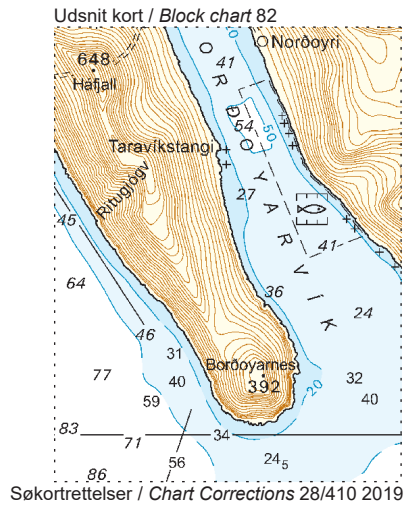


Søkortrettelser / Chart Corrections 28/407 2019

Udsnit kort / Block chart 82

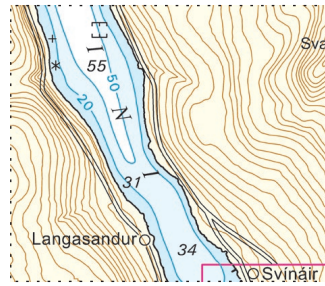


Søkortrettelser / Chart Corrections 28/409 2019



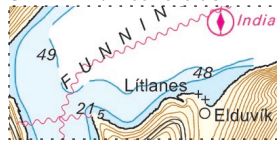


Udsnit kort / Block chart 82



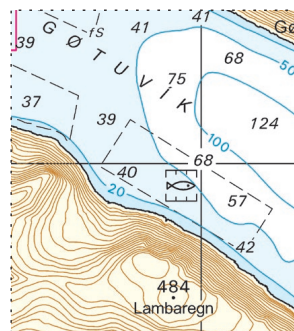
Søkortrettelser / Chart Corrections 5/29 2021

Udsnit kort / Block chart 82



Søkortrettelser / Chart Corrections 6/48 2021

Udsnit kort / Block chart 82



Søkortrettelser / Chart Corrections 20/185 2021

Tekst, kort/ Note chart 82

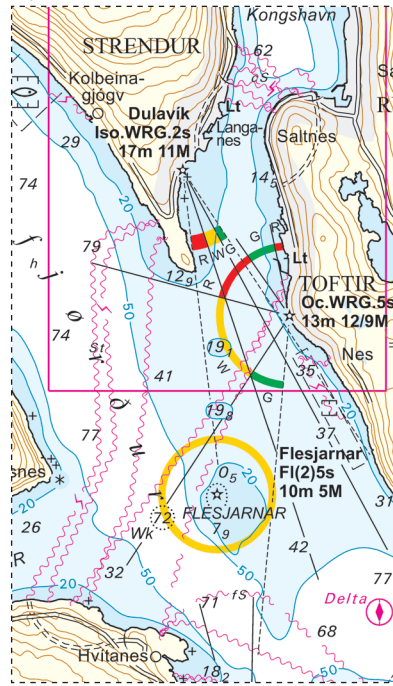
RAMSAR-OYGGJ
Millum 15. apr. – 31. aug., er bannað:
- at sigla skjótari enn 8 fjórðingar
- at sigla við vatnskutarum
- at halda óneyðugan gang, eitt nú frá hörðum tónleiki

RAMSAR SITE
Between 15 Apr – 31 Aug, restrictions apply:
- max speed 8 knots
- the use of water scooters are prohibited
- loud and unnecessarily noise is prohibited

Sjókortrætting / Chart correction 26/2022

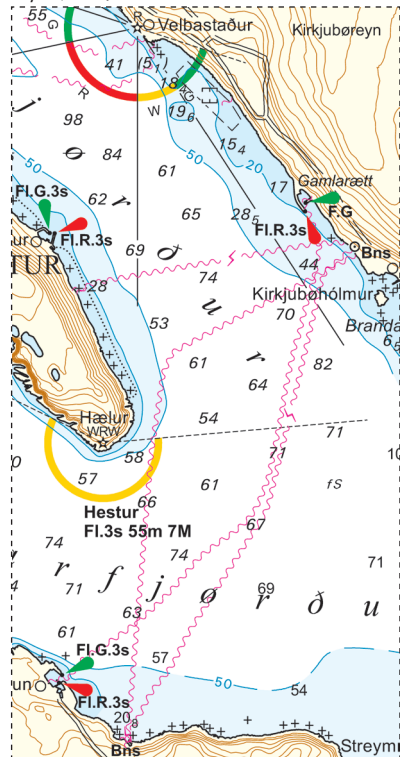


Mynd, kort/ Note chart 82



Sjókortrætting / Chart correction 30/2022

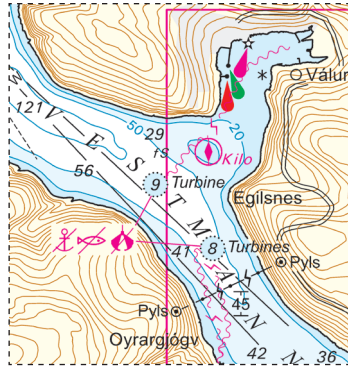
Mynd, kort/ Note chart 82



Sjókortrætting / Chart correction 32/2022



Mynd, kort / Note chart 82



Sjókortrætting / Chart Correction 28/2023