



umhvørvisstovan  
farøese environment agency

# SJÓKORT- RÆTTINGAR

*Chart Corrections*

## KORT 81

Rætting nr. / Correction no. 50 (2018) - 23 (2023)



# SIJOKORTRÆTTINGAR

## Chart Corrections / Kort 81

**Dagført til sjókortrætting nr. (íroknað)**  
Updated to Chart Corrections no. (incl.)

4 / 2017

**Galdandi sjókortútgáva (nr. /dagur)**  
Current chart edition (no. / date)

2 / feb 2017

| Ár / Year | Rætting nr. / Correction no. |
|-----------|------------------------------|
| 2018      | 50, 128, 129                 |
| 2019      | 215, 405, 485                |
| 2021      | 1005, 1006                   |
| 2022      | 2, 16, 18, 29                |
| 2023      | 8, 19, 23                    |

© Umhvørvisstovan

Sjókortrættingar / Chart Corrections

[www.us.fo](http://www.us.fo)

Kort 81 sjókortrættingar inniheldur almennar sjókortrættingar fyri galdandi útgávu av sjókort 81. Sjókortrættingar áðrenn 1. juli 2021 vóru útgivnar av GST.

Upplýsingarnar í klombum eftir rættingarnar vísa til EFS (nr./leypanði ár) ella aðra keldu.

Vegleiðing til útskrivan av rættingarblökkum: Vel papír A4 stódd og prenta veruligu stódd.

Umvørvisstovan, Traðargøta 38, Postboks 2048, FO-165 Argir, Tel. +298 342 400, [us@us.fo](mailto:us@us.fo), [www.us.fo](http://www.us.fo)

Chart Corrections Kort 81 contains the official corrections to the current edition of Faroese Chart 81. Chart corrections issued prior to 1st July 2021 where originally published by the Danish Geodata Agency.

The figures in brackets after the corrections refer to EFS (no./serial no. year) or other source.

Printing instructions for blocks at set scale: Print on paper size A4, print actual size.



## Ár/ Year

## Rættingar nr. / Corrections no.

| 2018 | HVALBIARFJØRÐUR  |  |                        |
|------|--|--|------------------------|
| 50   | Tilføj medfølgende udsnit / <i>Insert accompanying block</i> |  | 61°36,69'N 006°54,33'W |
|      |  |  | (5/84 2018)            |

| 2018 | VÁGAR N                |   |                        |
|------|------------------------|---|------------------------|
| 128  | Tilføj / <i>Insert</i> |  FI(5)Y.20s<br>Recording Station | 62°08,25'N 007°22,77'W |
|      |                        |   | (10/166 2018)          |

| 2018 | BOÐIN E               |   |                        |
|------|-----------------------|---|------------------------|
| 129  | Udtag / <i>Delete</i> |  FI(5)Y.20s<br>Recording Station | 62°00,19'N 006°36,31'W |
|      |                       |   | (10/179 2018)          |

| 2019 | HESTUR                      |              |                          |
|------|-----------------------------|--------------|--------------------------|
| 215  | Ret fra / <i>Amend from</i> | FI.3s 75m 7M | 61°55,947'N 006°52,108'W |
|      | til / <i>to</i>             | FI.3s 55m 7M |                          |
|      |                             |              | (20/331 2019)            |

| 2019 | SEKKJATANGSBOÐI  |  |                        |
|------|--|--|------------------------|
| 405  | Tilføj medfølgende udsnit / <i>Insert accompanying block</i> |  | 62°07,73'N 006°35,45'W |
|      |  |  | (27/452 2019)          |

| 2019 | RITUNØVA W   |  |                        |
|------|--|--|------------------------|
| 485  | Tilføj medfølgende udsnit / <i>Insert accompanying block</i> |  | 62°08,28'N 007°23,41'W |
|      |  |  | (36/593 2019)          |



## Ár/ Year

### Rættingar nr. / Corrections no.

| 2021 | VÁGAFJØRÐUR - SANDOY NW  |  |   |
|------|--|--|---|
| 1005 | Rætta a) - c) / Amend in a) - c)<br><br>Til d) - g) / to d) - g) |  | a) 61°59,85'N 007°04,40'W<br>b) 61°56,56'N 007°00,77'W<br>c) 61°54,73'N 006°59,55'W<br>d) 61°59,85'N 007°04,40'W<br>e) 61°57,36'N 007°05,80'W<br>f) 61°55,36'N 007°03,86'W<br>g) 61°54,73'N 006°59,55'W |

(NET, 29. september 2021)

| 2021 | SKÚGVOY SW - HVALBIARFJØRÐUR                         |  |                      |
|------|--|--|----------------------|
| 1006 | Set inn tilhoyrandi mynd / Insert accompanying block |  | 61°41,0'N 006°53,8'W |

(NET, 29. september 2021)

| 2022 | VÍKARFJØRÐUR - TRONGISVÁGSFJØRÐUR  |      |  |
|------|--|------|--|
| 2    | Strika ímillum a) - b) / Delete between a) - b)<br><br>Sett ímillum c) - f) / Insert between c) - f) | <br> | a) 61°32,25'N 006°34,88'W<br>b) 61°26,57'N 006°43,36'W<br>Strond / Coast<br>c) 61°32,25'N 006°34,88'W<br>d) 61°31,80'N 006°43,82'W<br>e) 61°32,25'N 006°46,56'W<br>f) 61°31,74'N 006°46,92'W<br>Strond / Coast |

(NET, 24. januar 2022)

| 2022 | KALSOYARFJØRÐUR                |      |                        |
|------|--------------------------------|------|------------------------|
| 16   | Rætta / Amend from<br>til / to | <br> | 62°15,53'N 006°39,99'W |

(SEV 18. mars 2022)

| 2022 |  |  |  |
|------|--|--|--|
| 18   | Broyt verandi tekst GENERALISERING til tilhoyrandi tekst /<br>Replace accompanying note GENERALIZATION |  |  |

(Umhvørvisstovan mai 2022)



## Ár/ Year

## Rættingar nr. / Corrections no.

### 2022 FLE SJARNAR

29 Set inn tilhoyrandi mynd / *Insert accompanying block* 62°03,35'N 006°44,00'W

(Umhvørvisstovan mai 2022)

### 2023 TRONGISVÁGSFJØRÐUR - VÁGSFJØRÐUR

8 Set inn tilhoyrandi mynd / *Insert accompanying block* 61°30,70N 006°40,90W

(Umhvørvisstovan juni 2023)

### 2023 NÓLSOY S

19 Set inn dýpd á a) / *Insert depth in a)* 23<sub>5</sub> a) 61°54,44'N 006°39,58W

Strika dýpd á b) / *Delete depth in b)* 41 b) 61°54,23'N 006°39,76W

(Umhvørvisstovan juni 2023)

### 2023 SANDOY E

23 Set ímillum a) - d) / *Insert between a) - d)*  a) 61°40,0'N 005°43,0W  
Rammuna / *Border*

b) 61°40,0'N 005°50,0W

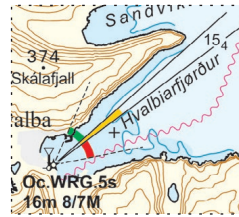
c) 62°00,0'N 005°50,0W

d) 62°00,0'N 005°43,0W  
Rammuna / *Border*

(Arktisk Kommando 16. november 2023)

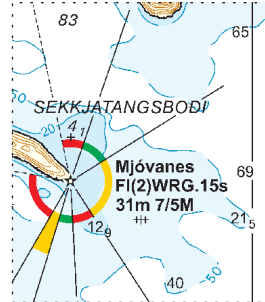


Udsnit kort/Block chart 81



Søkortrettelser/Chart Corrections 5/50 2018

Udsnit kort / Block chart 81



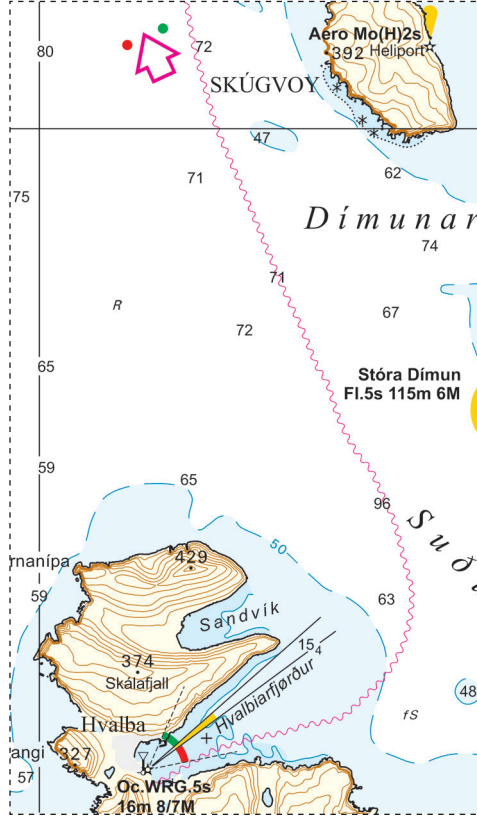
Søkortrettelser / Chart Corrections 28/405 2019

Udsnit kort / Block chart 81



Søkortrettelser / Chart Corrections 36/485 2019

Mynd, kort / Block chart 81



Sjökortrætting / Chart correction 1006/2021



Tekst, kort/ Note chart 81

GENERALISERING

Brændetiden for fyrene vises ikke i dette kort.

Detaljer er vist i kort 82 og 83.

For yderligere detaljer se 'Dansk Fyrliste' på [www.dma.dk](http://www.dma.dk).

GENERALIZATION

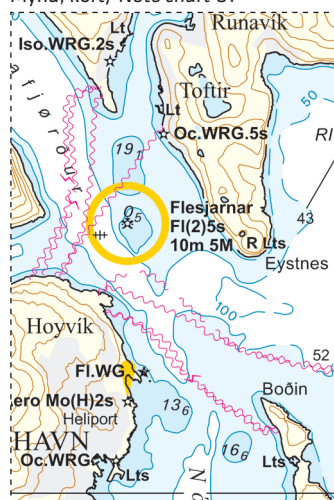
Exhibition of the lights are not shown in this chart.

Details are shown in charts 82 and 83.

For further details see 'Dansk Fyrliste' (Danish List of Ligths) on [www.dma.dk](http://www.dma.dk).

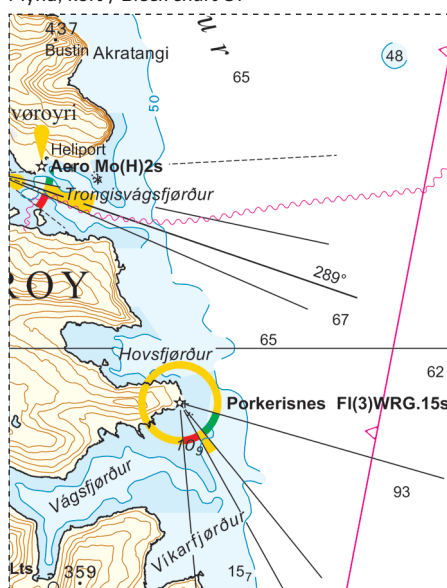
Sjökortrætting / Chart correction 18/2022

Mynd, kort/ Note chart 81



Sjökortrætting / Chart correction 29/2022

Mynd, kort / Block chart 81



Sjökortrætting / Chart Correction 8/2023