

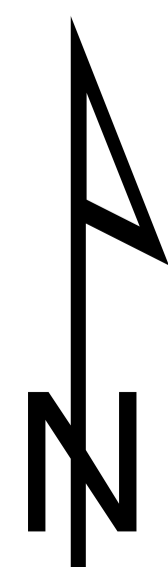
Strendur - Kolbeinagjógv - Innan Glyvur

Strendur - Kolbeinagjógv - Innan Glyvur

Kort, sum vísir virðismetingina av jørðini.

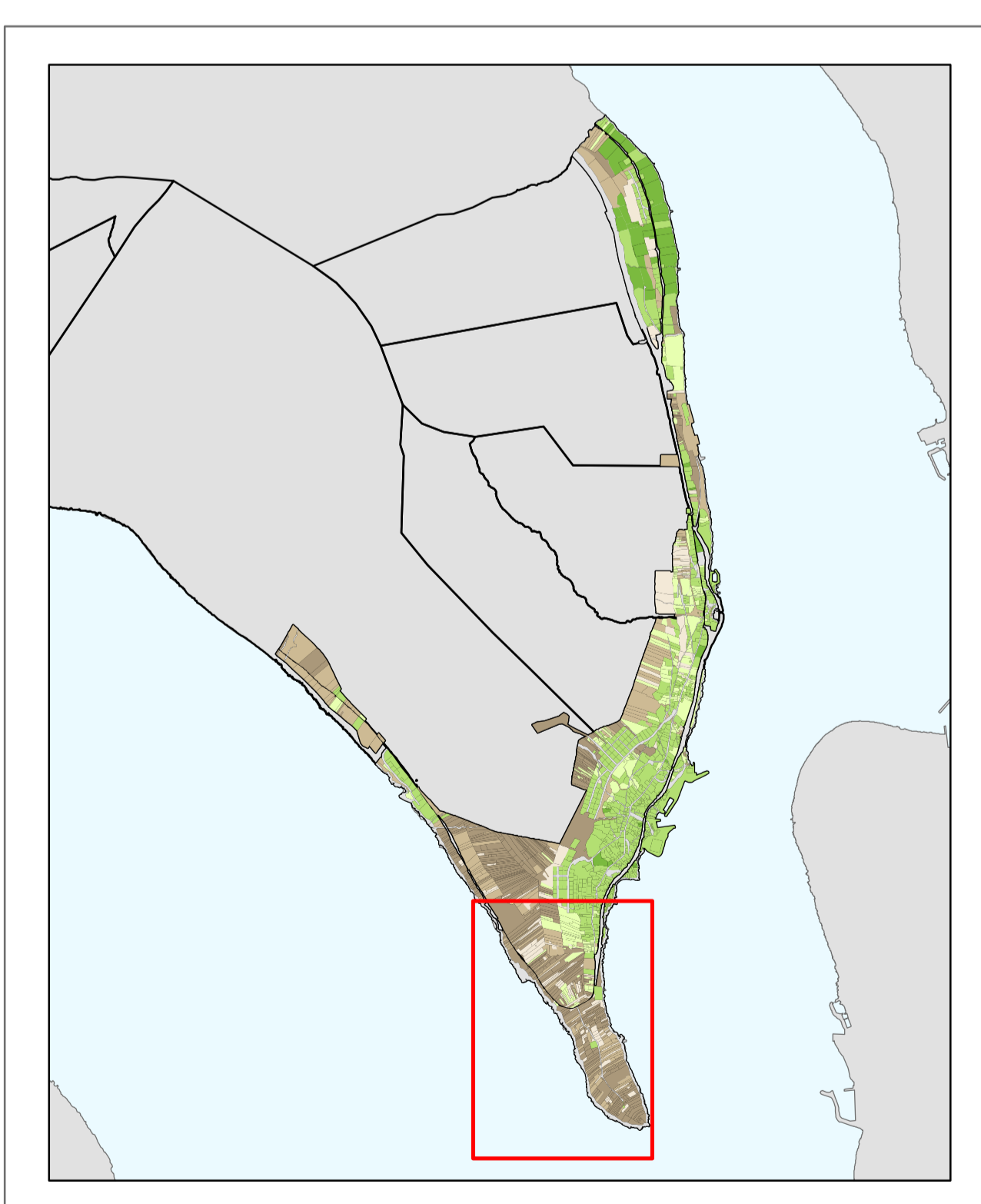
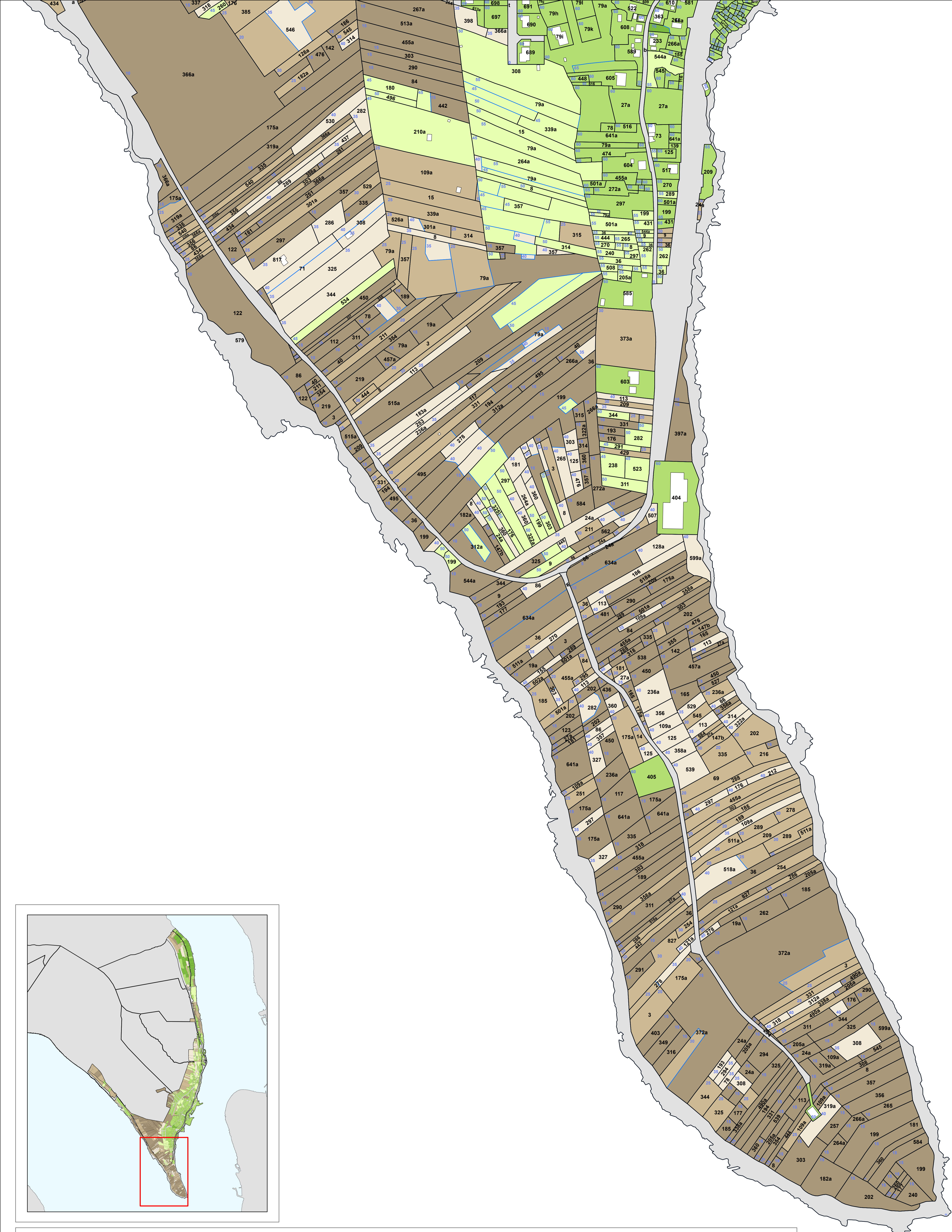
Rættað smb. niðurstøðu á útskiðingarnevndarfundi 5. juni 2013.

Teknlýsing		Met (%)	
—	MatrikulKort	35; 40	45; 50; 55
□	Bygningar	5; 10; 15	60; 65
□	Uttan met	20; 25; 30	70; 75; 80

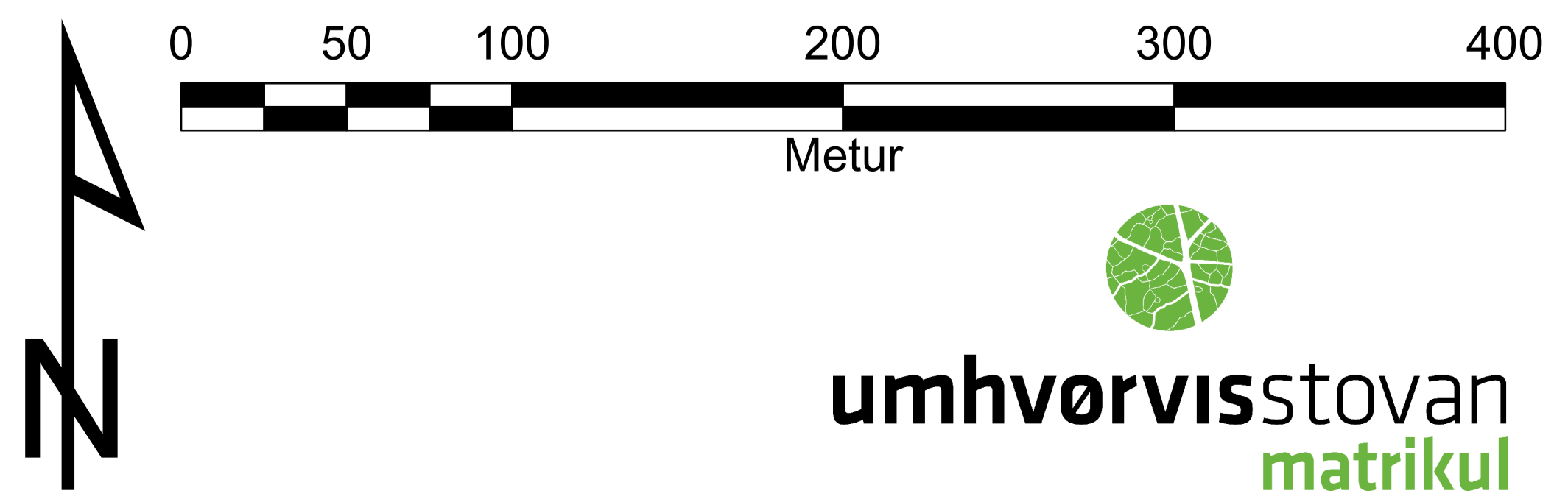



umhvørvisstovan
matrikul





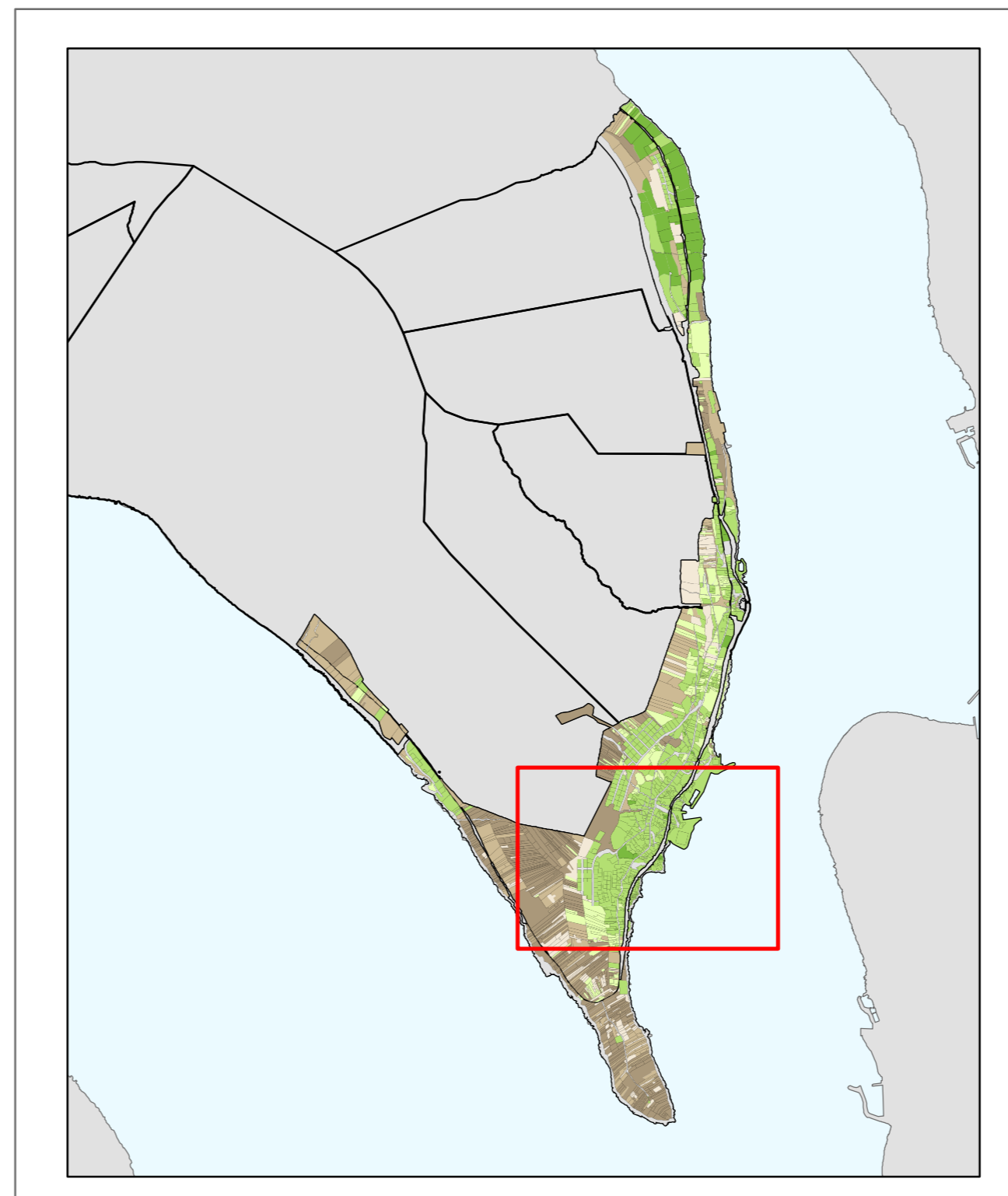
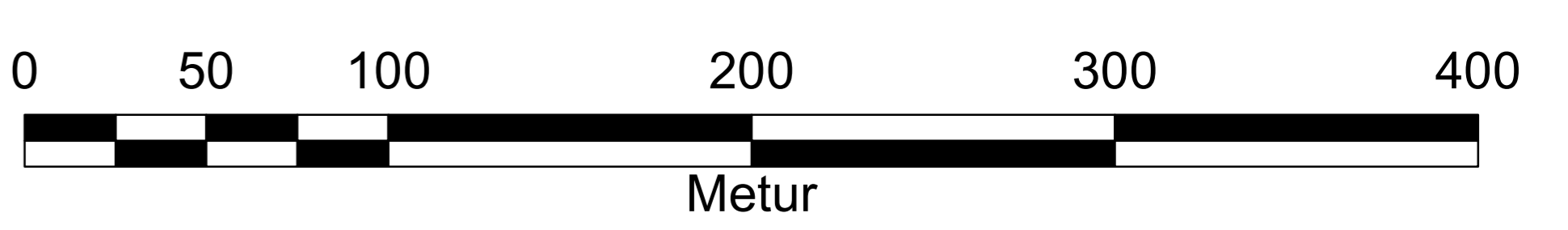
Teknlýsing		Met (%)	
—	MatrikulKort	35; 40	45; 50; 55
□	Bygningar	5; 10; 15	60; 65
□		20; 25; 30	70; 75; 80
□		Uttan met	





Teknlýsing

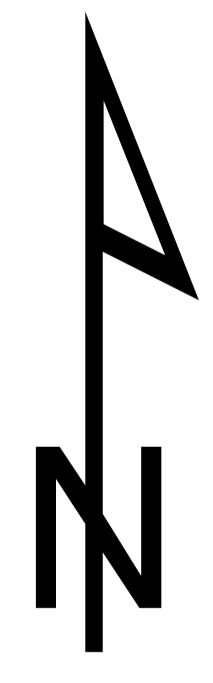
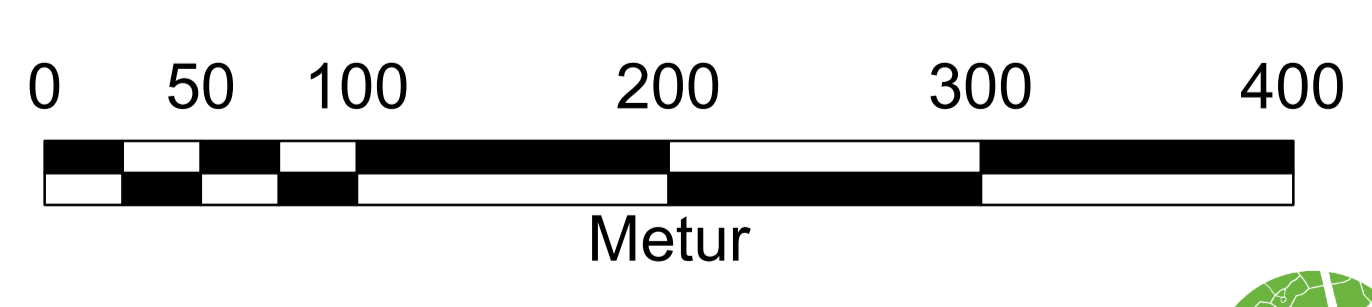
	Met (%)	
— MatrikulKort	Uttan met	35; 40
□ Bygningar	5; 10; 15	45; 50; 55
	20; 25; 30	60; 65
		70; 75; 80



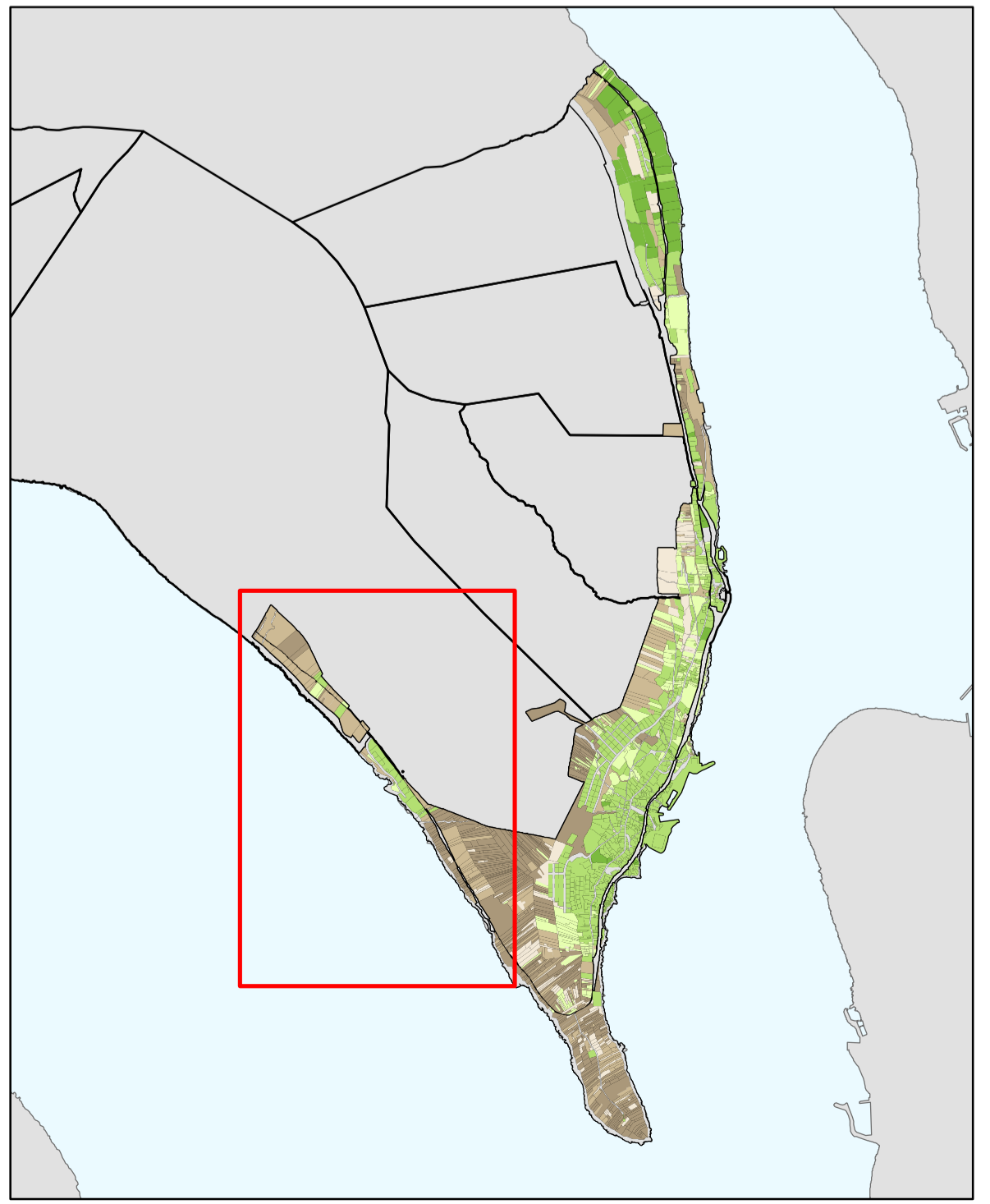


Teknlýsing

	Met (%)	
— MatrikulKort	Uttan met	35; 40
□ Bygningar	5; 10; 15	45; 50; 55
	20; 25; 30	60; 65
		70; 75; 80



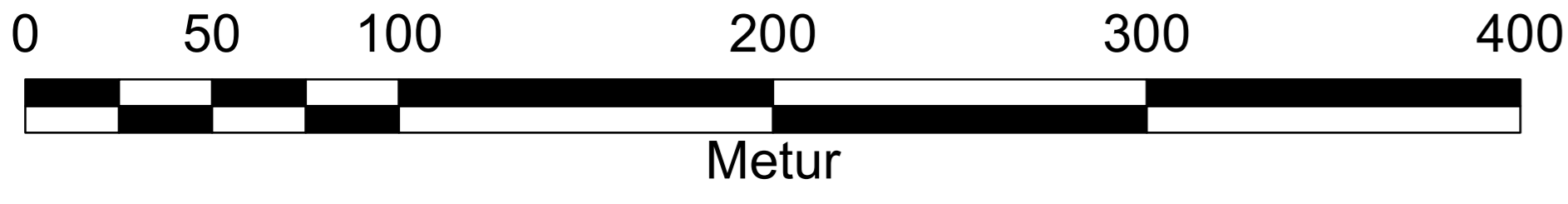

umhvörvisstovan
 matrikul



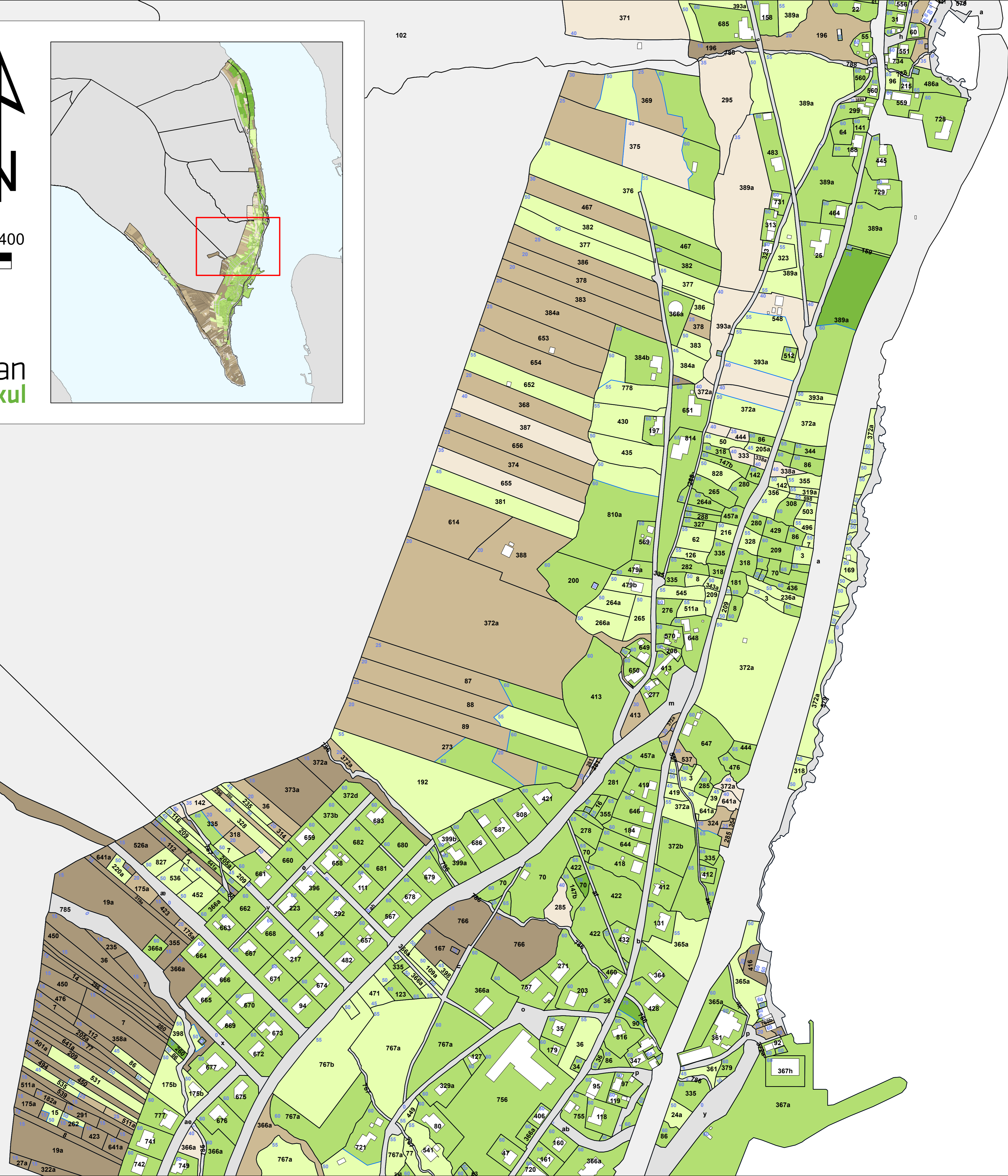
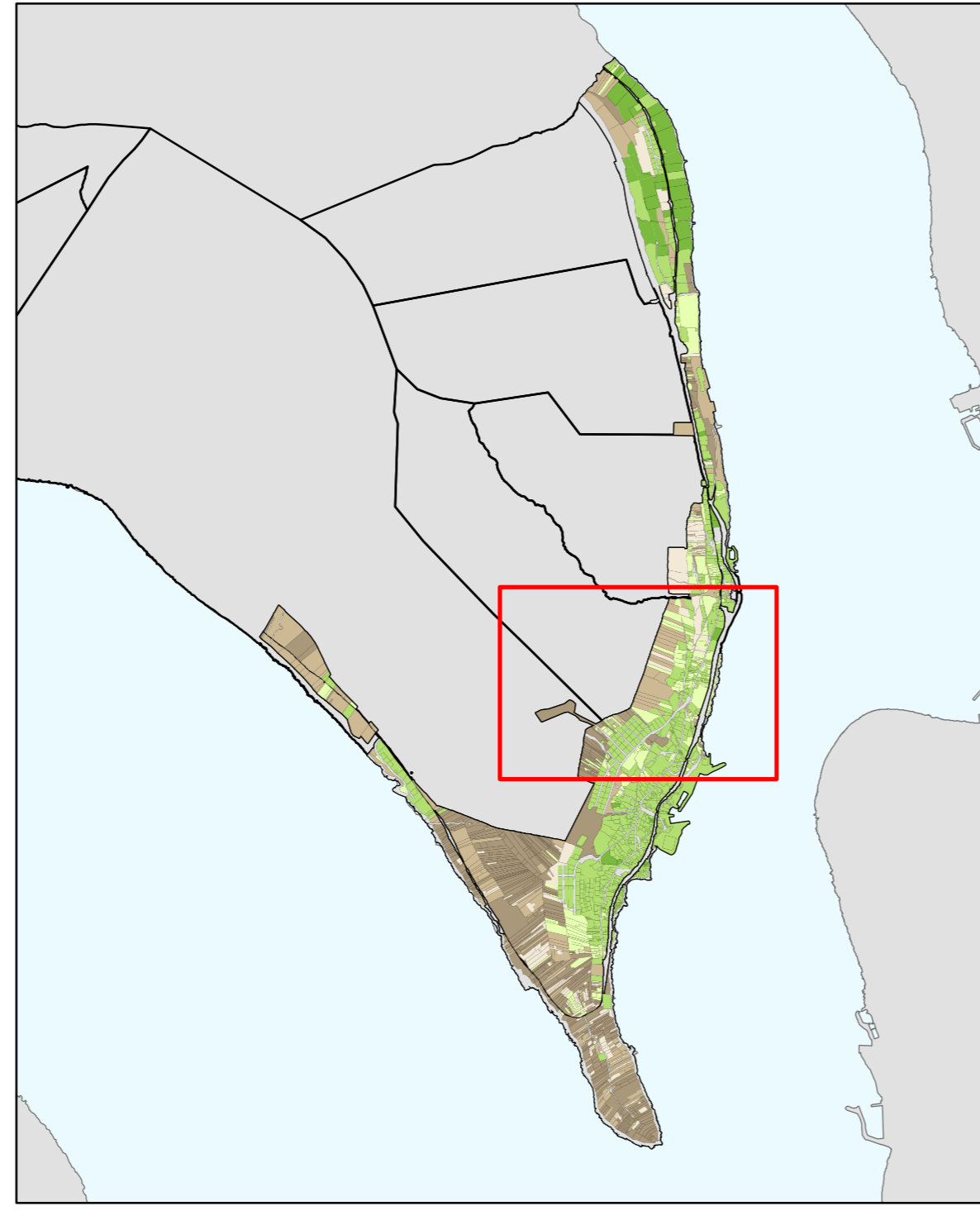
Teknlýsing

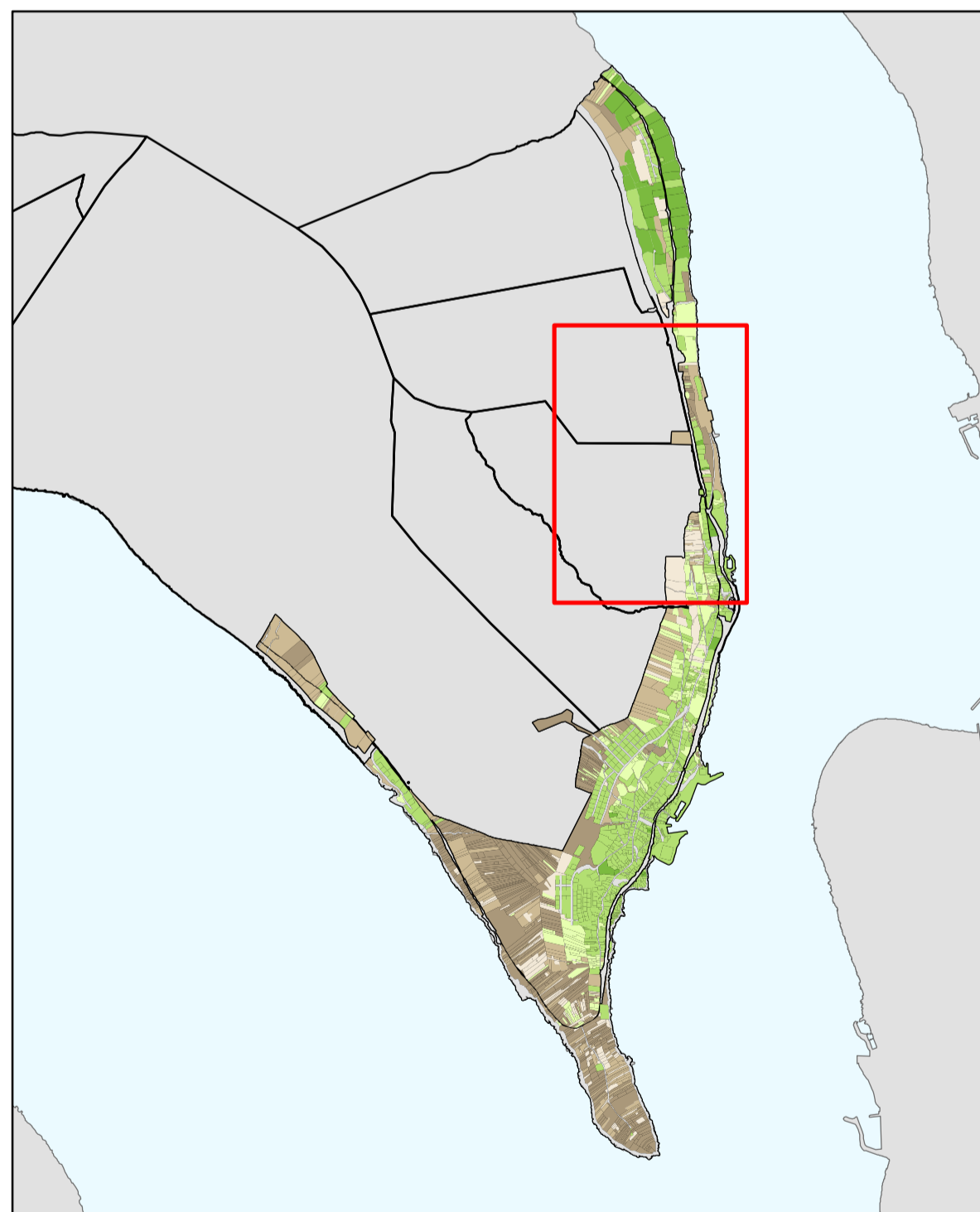
Met (%)

— MatrikulKort	Uttan met	35; 40
Bygningar	5; 10; 15	45; 50; 55
	20; 25; 30	60; 65
		70; 75; 80



umhvörvisstovan
matrikul



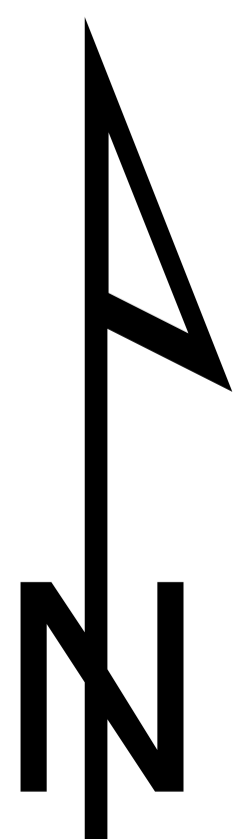
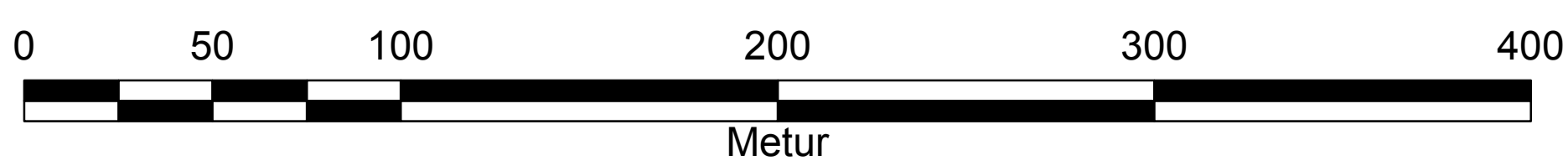


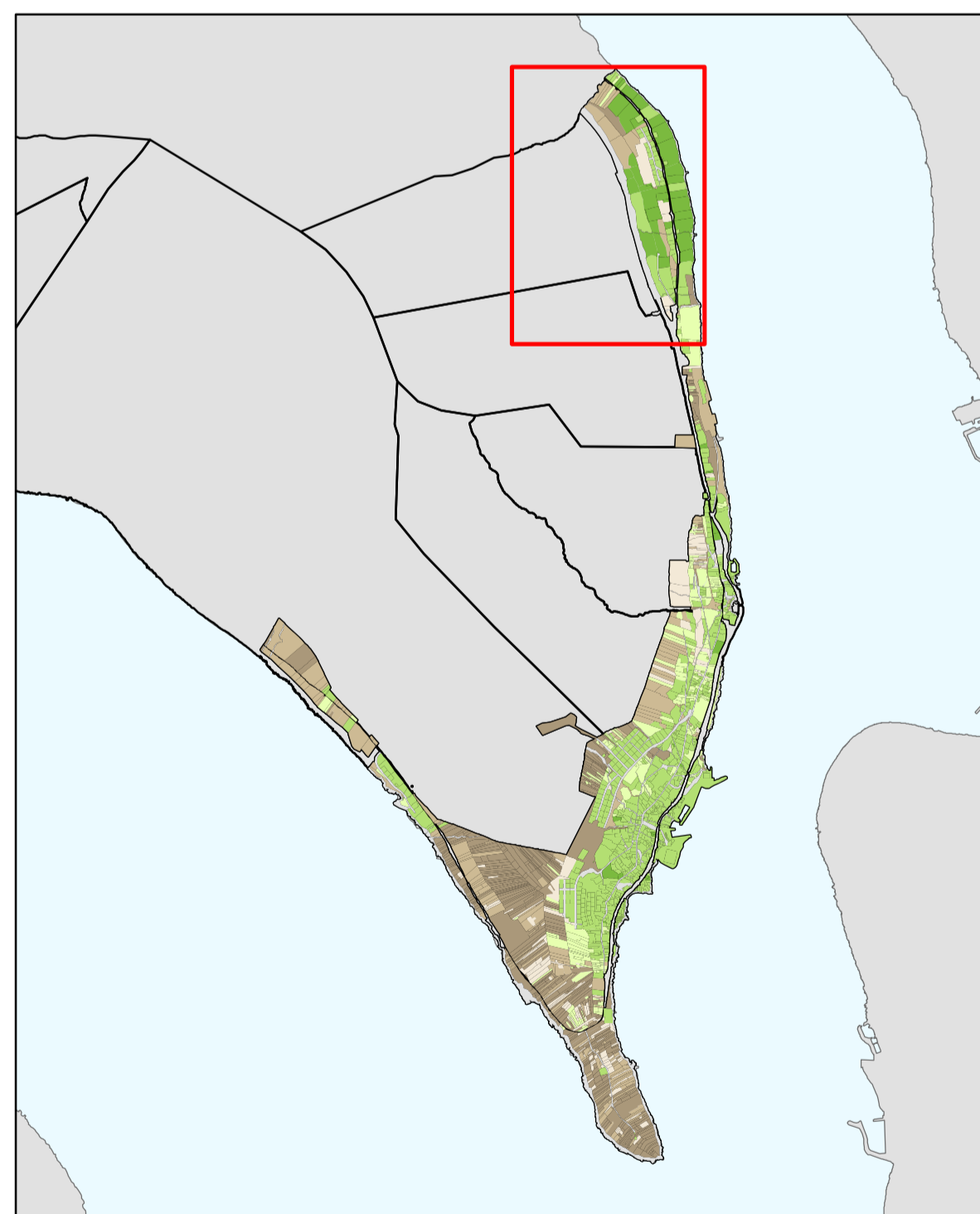
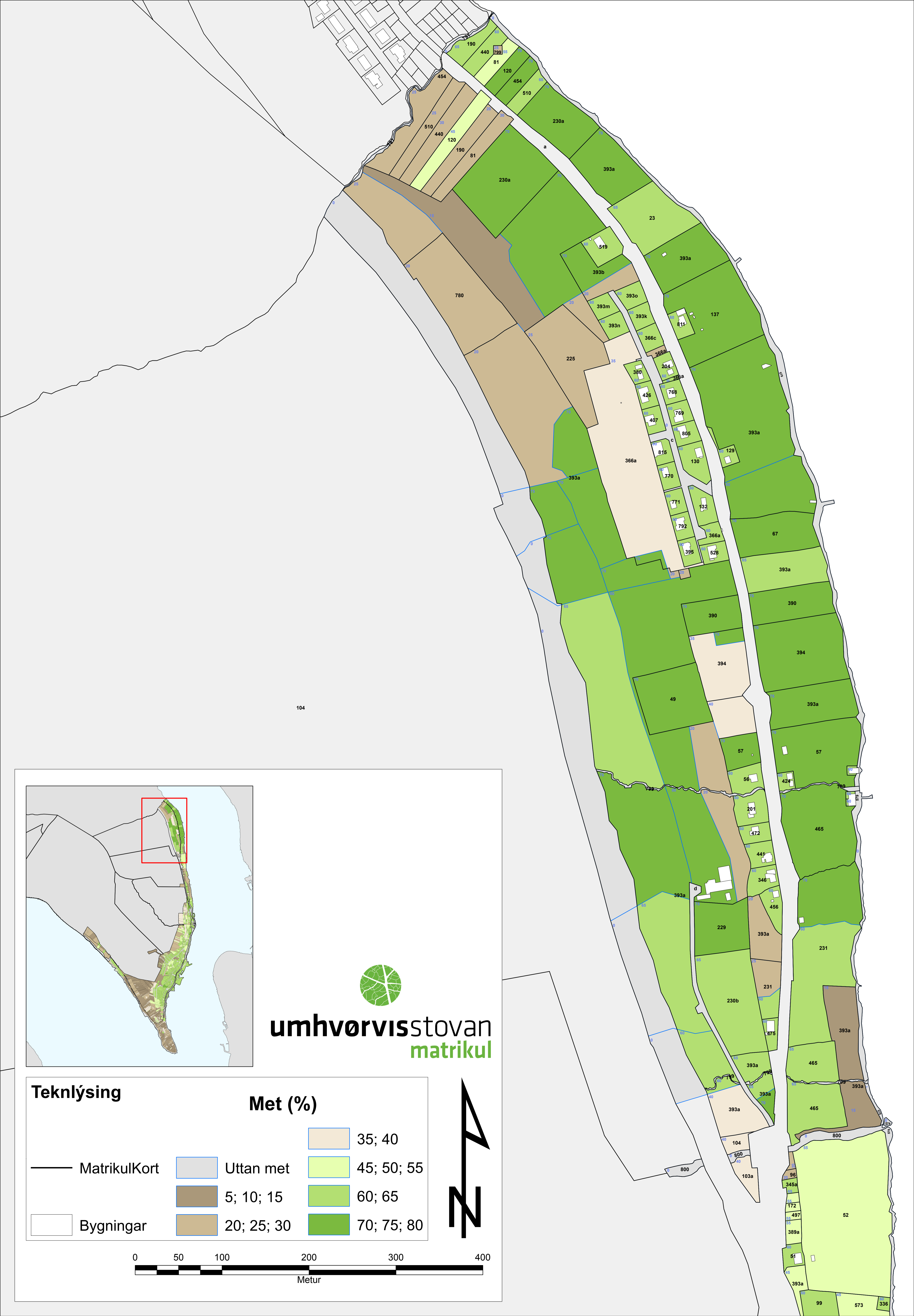
umhvörvisstovan
matrikul

Teknlýsing

Met (%)

— MatrikulKort	Uttan met	35; 40
Bygningar	5; 10; 15	45; 50; 55
	20; 25; 30	60; 65
		70; 75; 80





umhvörvisstovan
matrikul

Teknlýsing

— MatrikulKort	Uttan met	35; 40
Bygningar	5; 10; 15	45; 50; 55
	20; 25; 30	60; 65
		70; 75; 80

Met (%)

0 50 100 200 300 400
Metur